

Twinkle Twinkle



Little Star

Thursday 8th and  
Friday 9th December 2011

# The national Children's University fourth annual Conference

# Day 1 Thursday 8th December

## 11.30 Registration, Coffee and Lunch

Hotel Reception and The Orangery

---

## 12.30 Welcome and Introductions

Tilden Suite

### Ger Graus

*Chief Executive, Children's University*

### Dr J Sandy Bradbrook

*Chair, CU Trust*

---

## 13.00 Spaces, Dreams and the Children's University ...Thoughts about Informal Learning

Tilden Suite

### Dr James Bradburne

*Director General of the Fondazione Palazzo Strozzi, Florence (Italy) and National Children's University Patron*

Dr James Bradburne through his work shows a fundamental respect for the intelligence of children. In this session he will explore his thinking on approaches to informal learning, to its changing landscape and to remagicalising it!

---

## 14.05 The Children's University: So What...?!

Tilden Suite

### Megan Boyden and Taylor Young

*Colchester Children's University*

---

## 14.25 Coffee

Courtyard

---

## 14.45 CU Seminars and The Market Place

Delegates will have the opportunity to attend four different Seminars (see back page for session details) throughout the afternoon sessions as well as visit The Market Place.

### 14.45 Session 1

### 15.20 Session 2

### 15.55 Session 3

### 16.30 Session 4

### 17.05 Session 5

Please refer to the Seminar Attendance Form in your delegate pack to find out when you will be attending each Seminar.

---

## 17.35 The Market Place continued

William Turner Suite

## 18.00 Close (and Hotel Check In)

Hotel Reception

---

## 19.15 Drinks Reception

Brabazon Bar and Brabazon Suite

---

## 19.45 Dinner and After-Dinner Speech

William Turner Suite

### Professor Gervase Phinn

*Author and Doncaster Children's University Chancellor*

# Day 2 Friday 9th December

## 08.20 Hotel check out

Hotel Reception

---

## 08.45 Twinkle twinkle little Star – Achievements, Developments, Things to Do and Smiles

Tilden Suite

### Ger Graus

*Chief Executive, Children's University*

---

## 09.30 Children's University – National Evaluation and Research

Tilden Suite

### Professor John MacBeath

*Professor Emeritus at the University of Cambridge and Projects Director for the Commonwealth Centre in Education*

As part of the national evaluation of the Children's University initial findings from the fourth evaluation report will be shared and future developments explored.

---

## 10.00 Achievement for All

Tilden Suite

### Professor Sonia Blandford

*National Director of Achievement for All and Professor of Educational Leadership and Innovation at the University of Warwick*

Achievement for All is a school improvement framework with particular focus on raising the aspirations, access and achievements of the lowest 20% of learners in all schools. The Achievement for All programme will work with schools to support school improvement in raising the attainment levels of the lowest 20% of pupils, and improving attendance, behaviour, peer relationships and participation in extra-curricular activities. And that is where the national partnership with the Children's University comes in...

## 10.45 Coffee

Tilden Suite

---

## 11.00 Rapid Information Exchange (learning from each other)

Tilden Suite

Find out more about each others' Children's Universities through our own version of 'speed-dating'. Learning from each other through discovering and sharing practice – from the curriculum to validation and from data management to...?!

---

## 12.15 Thoughts, Reminiscences and Crystal Balls...

Tilden Suite

### Professor Sir Tim Brighouse

*Former Professor of Education at Keele University, Chief Education Officer for Oxfordshire and Birmingham and Teacher*

---

## 12.45 And finally...

Tilden Suite

### Ger Graus

*Chief Executive, Children's University*

---

## 13.05 Lunch and Departure

Tilden Suite

# Conference Speakers

## Dr James Bradburne



Dr James Bradburne is a British-Canadian architect, designer and museum specialist who has designed World's Fair pavilions, science centres, and international

art exhibitions. Educated in Canada and England, he developed numerous exhibitions, research projects and symposia for UNESCO, national governments, private foundations, and museums worldwide during the course of the past fifteen years.

From January 1st, 1999 until the end of 2002 he directed the Museum für Angewandte Kunst in Frankfurt am Main and from 2003 – 2006 was Director of the Next Generation Foundation, an independent foundation to promote innovation in informal learning initiated by the president of LEGO, Kjeld Kirk Kristiansen.

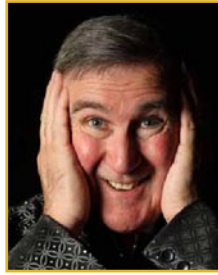
James is presently Director General of the Fondazione Palazzo Strozzi, Florence's largest temporary exhibition space and one of Florence's most important Renaissance palaces. He lectures internationally about new approaches to informal learning, and has published extensively. In 2005 and 2006, Dr Bradburne was the E. Desmond Lee Distinguished Visiting Professor at Webster University, St. Louis, Missouri, where he taught a graduate programme in informal learning, and hosted an international symposium entitled 'The Time and Space of Learning'.

For more information visit [www.bradburne.org](http://www.bradburne.org) and [www.palazzostrozzi.org](http://www.palazzostrozzi.org)

---

Dr James Bradburne is a Patron of the National Children's University.

## Professor Gervase Phinn



Professor Gervase Phinn (born in Rotherham, South Yorkshire) is an English author and educator.

After a career as a teacher he became a schools inspector

and, latterly, Visiting Professor of Education at the University of Teesside.

He has published numerous volumes of autobiography, collections of poetry and a number of books about education. He has a particular interest in children's literature and literacy and is widely known as a lively and entertaining speaker.

In 2004 Gervase Phinn received The Speaker of the Year Award from the Association of Speakers' Clubs. *Up and Down in the Dales*, won the Customer Choice Award at the Spoken Book Awards.

In 2005 the highest academic award of Sheffield Hallam University, Doctor of the University was conferred upon him by the Chancellor, Professor Lord Winston. He is a Fellow of the Royal Society of Arts and an Honorary Fellow of the English Speaking Board.

He is married with four grown-up children.

---

Professor Gervase Phinn is the Chancellor of Doncaster Children's University.

## Professor John MacBeath, OBE



Professor John MacBeath, OBE is Professor Emeritus at the University of Cambridge where he held the Chair of Educational Leadership from 2000 to 2008.

He is currently Projects Director for the Commonwealth Centre in Education. John MacBeath was a member of Tony Blair's Task Force on Standards and in 2001 he received the OBE for services to education. For two decades he has researched learning in and out of school, learning in museums, study support and since 2007 has worked with the Children's University in both a consultancy and evaluation capacity. His latest book *Reinventing Our Schools: From Political Visions to Classroom Reality* was published in 2010. Other publications by Professor MacBeath include *Schools on the Edge: Responding to Challenging Circumstances* (2007), *Democratic Learning: the challenge to school effectiveness* (2004) and *Leadership as a subversive activity* (2006).

Professor John MacBeath's evaluations of the national Children's University for 2008, 2009 and 2010 can be found at [www.childrensuniversity.co.uk/aboutus](http://www.childrensuniversity.co.uk/aboutus)

## Professor Sonia Blandford



Professor Sonia Blandford is currently Professor of Educational Leadership and Innovation (University of Warwick); National Director Achievement

for All (DfE/National College); Adviser to CEO (Teach First), prior to which she Director of Research and Development at Teach First, following almost six years as Pro-Vice Chancellor and Dean of Education at Canterbury Christ Church University.

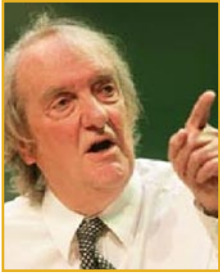
Sonia began her career as a music teacher, founding two community arts charities, which celebrate 30 years in March 2011. Appointed to the Senior Leadership team of two comprehensive schools with academic and pastoral responsibilities, Sonia led school improvement and arts initiatives at school and national level. On completion of two Masters (music and education), Sonia was among the first cohort to complete the UK inaugural Doctor of Education (EdD) programme at the University of Bristol.

Sonia is a member of various European and international committees, government adviser and conference speaker. She is a Senior Research Fellow at the Department of Education, Oxford University and a visiting professor at the Institute of Education (London). Sonia is also a conductor.

---

Professor Sonia Blandford is the Chancellor of Warwickshire CU and Trustee of the National Children's University.

## Professor Sir Tim Brighouse



Professor Sir Tim Brighouse was educated at grammar schools in Loughborough and Lowestoft and St Catherine's College, Oxford University. He began

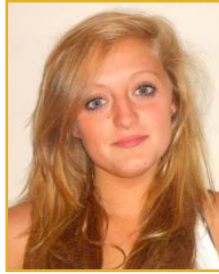
his career as a schoolteacher, becoming a deputy head at twenty six. Later he was Professor of Education at Keele University (1989–1993), and Chief Education Officer in both Oxfordshire (1978–1989) and Birmingham Local Authorities.

Tim was Commissioner for London Schools/ Chief Adviser for London Schools (2002-2007). Currently, he is Visiting Professor at the Institute of Education London.

Tim Brighouse has written books on education, made numerous media broadcasts and conference speeches. He holds honorary degrees from a number of British universities.

Professor Sir Tim Brighouse was knighted in the 2009 New Year Honours.

## Megan Boyden



Megan Boyden attends Philip Morant School and is a Year 10 student. Meg was one of the first graduates of the Colchester Children's University, receiving her national Bronze Award in January of this year.

Fortunate enough to have been chosen to be involved in the 'Supporters to Reporters' programme Meg has had the opportunity to train as a reporter and attended lots of sports events, including football matches, open water swimming events and much more, including a trip to the BBC Studios. At each event Meg was trained in interviewing, reporting and editing work and then creating blogs and web reports.

In her spare time Meg swims for Colchester Swimming Club, and trains hard before school and in the evenings too.

As one of the oldest graduates of the Colchester Children's University Meg was invited to host Colchester's second graduation event in June of this year, and having written her own script, she co-presented in great style with Taylor Young. It went smoothly and Meg enjoyed the opportunity to host and speak to all the younger CU graduates encouraging them to continue collecting stamps in their Passport to Learning.

Of her involvement with Colchester Children's University Meg speaks enthusiastically.

*"I never imagined that becoming involved with the Children's University would provide so many opportunities and I certainly didn't think it would bring me to Manchester to speak at the National Children's University Conference, which, I think, is a real honour."*

## Taylor Young



Taylor Young has recently moved into Year 10 at Philip Morant School & College in Colchester, where he hopes to achieve excellent GCSE grades taking him onto further study

and eventually, perhaps a Master's Degree.

As one of the first graduates of the Colchester Children's University, Taylor received his national Bronze Award earlier this year, scripted and co-presented, with Meg Boyden, the 2nd Graduation Ceremony in Colchester in June of this year.

Taylor spends a lot of his time at the swimming pool, swimming for Colchester Swimming Club and, with a tough training schedule, Taylor has had to learn to set goals and structure a training programme which, like his involvement with the Colchester Children's University, has provided him with the opportunity to do so and the arena in which to strive to achieve them, whilst, of course, having fun.

Taylor has enjoyed every moment of his involvement with the Colchester Children's University so far and it has taught him to grasp every opportunity that presents itself.

Taylor's enthusiasm for the Children's University shines through: *"I have learnt to grasp every opportunity that presents itself. I feel being interested in everything I do will result in me being an interesting person. The Children's University is a great platform for young people to experience new and challenging situations and to be exposed to new things, I am very lucky to be involved in such an amazing organisation."*



## Dr J Sandy Bradbrook

Chair,  
CU Trust



## Ger Graus

Chief Executive,  
Children's University

## Seminar Speakers



## Lynne Upton

Director of Learning,  
Children's University



## Dr Richard Barry

Learning Consultant,  
Children's University



## Kelly Metcalfe

Community Manager,  
B&Q Plc



## Hilary Robinson

Children's Author,  
Broadcaster, Producer,  
Feature Writer and  
National CU Patron



## Nikki Taylor

CU Manager, Northamptonshire  
Children's University  
Back row: l to r: Kat Best,  
April-Rose Kennedy, Nikki Taylor  
Front row: l to r: Jack Kelly, Harry Brewill

# CU Seminars

## Seminar A

[www.childrensuniversity.co.uk](http://www.childrensuniversity.co.uk):

**A Website for All**

Stafford Suite

### Lynne Upton

*Director of Learning, Children's University*

### Dr Richard Barry

*Learning Consultant, Children's University*

The new national CU website will soon be there for all, with its 'Bank of Ideas', forums, opportunities to produce newsletters locally and nationally, and to have local CU websites within the national one ... find out more here.

---

## Seminar B **B&Q and CU:**

**Approaches to Family Learning**

Cheshire Suite

### Kelly Metcalfe

*Community Manager, B&Q Plc*

What the B&Q/CU partnership can bring to CU learning nationally and locally at a store near you!

---

## Seminar C **Marketing your CU**

Woodford Suite

### Hilary Robinson

*Children's Author, Broadcaster, Producer, Feature Writer and national CU Patron*

How to publicise and market your local CU as part of the national family; how to win friends and influence people to help enhance local CU sustainability.

## Seminar D **How Children lead the CU**

Brabazon Suite

### Nikki Taylor

*CU Manager, Northamptonshire Children's University*

"Doing It For The Kids" - Kat Best, April-Rose Kennedy, Jack Kelly and Harry Brewill will explore ways in which Northamptonshire young people take an active and strategic lead in their local CU.

---

## The Market Place

William Turner Suite

The Market Place provides an opportunity to find out what is out there in the Children's University learning world. Visit The Market Place and take ideas and plans home with you. The Market Place will be busy with organisations and individuals whose work has been recommended by you and the national CU as validated Learning Destinations.