



Achievements & Developments

*"University of fun
A brilliant way to get children inspired."*
The Sunday Times



Children's University Map January 2013

ENGLAND

● EXISTING ● PLANNED

- 1 Barnsley
- 2 Bedfordshire
- 3 Bicester
- 4 Birmingham
- 5 Blackburn
- 6 Blackpool
- 7 Bolton
- 8 Bournemouth
- 9 Bradford & District
- 10 Brighton & Hove
- 11 Bristol
- 12 Bury
- 13 Cambridgeshire
- 14 Chester
- 15 Cumbria
- 16 Cornwall
- 17 Coventry
- 18 Croydon
- 19 Darlington
- 20 Derby
- 21 Derbyshire
- 22 Devon
- 23 Doncaster
- 24 Dorset
- 25 Dudley
- 26 Durham
- 27 East Riding
- 28 East Sussex
- 29 Enfield
- 30 Essex
- 31 Fylde
- 32 Gateshead
- 33 Greenwich
- 34 Halton
- 35 Hammersmith and Fulham
- 36 Hartlepool
- 37 Havant
- 38 Herefordshire
- 39 Hull
- 40 Isle of Wight
- 41 Kent
- 42 Kirklees
- 43 Knowsley
- 44 Lambeth
- 45 Leeds
- 46 Leicester
- 47 Leicestershire
- 48 Lincolnshire
- 49 Liverpool
- 50 Manchester
- 51 Medway
- 52 Middlesbrough
- 53 Milton Keynes
- 54 New Forest
- 55 Newcastle upon Tyne
- 56 Newham
- 57 Norfolk
- 58 North Hertfordshire
- 59 North Tyneside
- 60 North Yorkshire
- 61 Northamptonshire
- 62 Northumberland
- 63 Nottingham
- 64 Nottinghamshire
- 65 Oldham
- 66 Oxford
- 67 Peterborough
- 68 Plymouth
- 69 Preston
- 70 Reading
- 71 Redcar and Cleveland
- 72 Rochdale
- 73 Rotherham
- 74 Rutland
- 75 Salford
- 76 Sandwell
- 77 Scarborough Borough
- 78 SCE Schools
- 79 Sefton
- 80 Sheffield
- 81 Shropshire
- 82 Slough
- 83 Solihull
- 84 Somerset
- 85 South Hertfordshire
- 86 Southampton
- 87 Southwark
- 88 St Helens
- 89 Staffordshire
- 90 Stockton-on-Tees
- 91 Stoke
- 92 Suffolk
- 93 Sunderland
- 94 Tauheedul Free Schools and Academies
- 95 Telford and Wrekin
- 96 Torbay
- 97 Wakefield
- 98 Walsall
- 99 Warrington
- 100 Warwickshire
- 101 West Berkshire
- 102 West Lancashire
- 103 West London
- 104 West Sussex
- 105 Wigan
- 106 Wirral
- 107 Wolverhampton
- 108 Worcestershire
- 109 Wyre
- 110 York

ISLE OF MAN

- EXISTING
1 Isle of Man

NORTHERN IRELAND

- EXISTING
1 Northern Ireland

SCOTLAND

- EXISTING ● PLANNED
1 Aberdeen
2 Borders
3 East Lothian
4 Glasgow
5 Mid Lothian

WALES

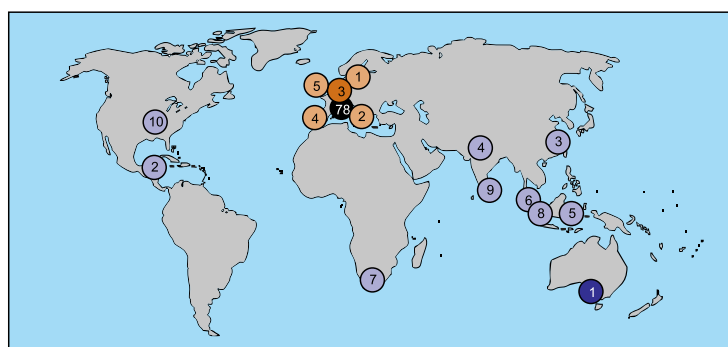
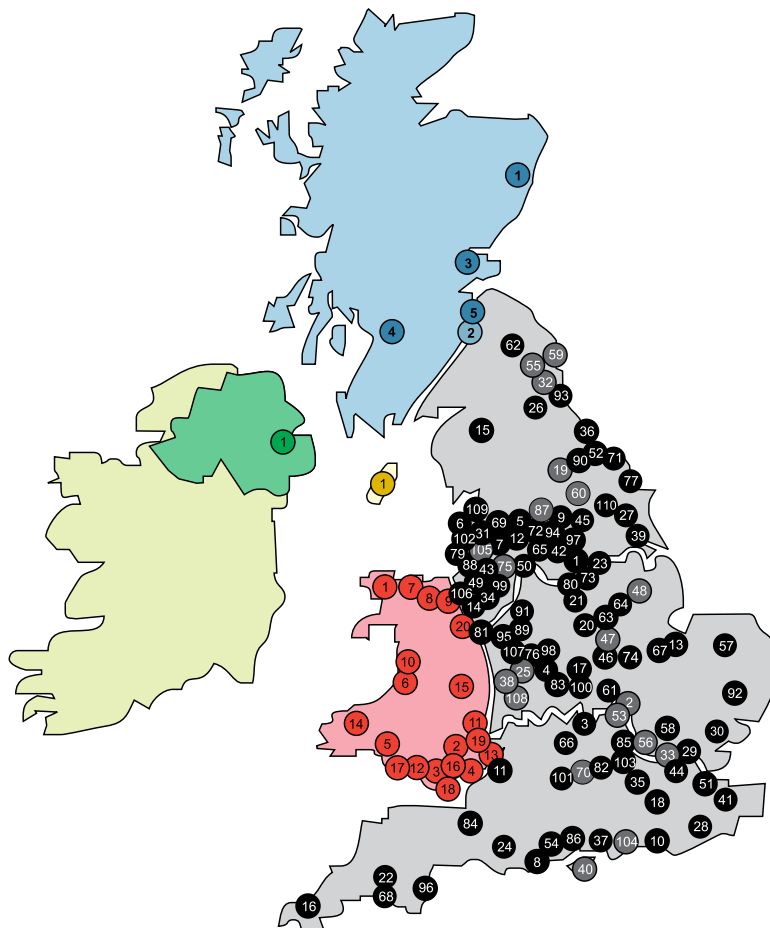
- EXISTING
1 Anglesey
2 Blaenau Gwent
3 Bridgend
4 Cardiff
5 Carmarthenshire
6 Ceredigion
7 Conwy
8 Denbighshire
9 Flintshire
10 Gwyneth
11 Monmouthshire
12 Neath Port Talbot
13 Newport
14 Pembrokeshire
15 Powys
16 Rhondda Cynon Taff
17 Swansea
18 The Vale of Glamorgan
19 Torfaen
20 Wrexham

EUROPE

- EXISTING ● PLANNED
1 Estonia
2 Italy
3 The Netherlands
4 Portugal
5 Republic of Ireland

REST OF THE WORLD

- EXISTING ● PLANNED
1 Australia
2 Belize
3 China
4 India
5 Indonesia
6 Malaysia
7 Republic of South Africa
8 Singapore
9 Sri Lanka
10 USA



78 CU Service Children's Education (SCE) Schools are in Belgium, Brunei, Canada, Cyprus, Falkland Islands, Gibraltar, Italy, The Netherlands and Turkey, with its head office in Germany.

"We must ask ourselves 'who is a child?'"

Carla Rinaldi

Introduction



Dr Sandy Bradbrook
Chair



Ger Graus
Chief Executive

Welcome to the Children's University's Achievements and Developments - January 2013.
In April 2007 the Children's University (CU) was established by the CU Trust with the financial support of the Sutton Trust and the Department for Education (DfE) in England ... and here we are - a full 5 years later and international!

The Chief Executive, Ger Graus, was appointed in April 2007 who set up the Children's University (CU) Trust head office in Manchester. The CU Trust's Chair is Dr Sandy Bradbrook. Since 2007, other funding partners have included JP Morgan, Nationwide, Fidelity Foundation, the Garfield Weston Foundation, the Charles Dunstone Charitable Trust and Scottish Power.

The Children's University aims to promote social mobility by providing high quality, exciting and innovative learning activities and experiences outside normal school hours to children aged 7-14 (and 5 and 6 year olds with their families) and engaging the wider communities as learning partners in the realisation of this. At the heart of its work is the ambition to raise aspirations – “... *aspire to inspire* ...” –, boost achievement and foster a love of learning, so that young people can make the most of their abilities and interests, regardless of the background into which they were born. Although open to all, the CU aims particularly to reach children and young people facing socio-economic and educational disadvantage through the targeting of grants to, and the promotion of activities in, areas of deprivation. It is here, we believe, that the benefits of high quality provision and opportunities will be felt most.

An important principle of the Children's University is that participation is voluntary. It is intentionally something other than school - with a different feel, different activities and often a different location, staff and peer group. So the ultimate testament to the effectiveness of the Children's University is that young people give up their time to attend and that they begin to realise that learning can be “... *a satellite navigation system to better places in life* ...” The significant increases in numbers over the past five years show they do indeed attend, and the comments and recommendations of parents, teachers and the children themselves show they are engaged and inspired too. Post-14 CU alumni are now also continuing to be involved in the running of the Children's University at local levels ...

As a rule of thumb and to quote Abbey, a nine year old CU student “... *Children's University learning is like 'grown-ups' university learning ...!*” - it is learning which can be ‘connected’ to Higher Education course provision as exemplified on the English www.ucas.com/students/coursesearch - in other

words: if you can aspire to a degree in it - whatever it is - the Children's University wants to know!

Each local Children's University has a link with a Higher Education Institution and is encouraged to appoint its own Chancellor. Local CU Chancellors include the authors Louis de Bernières and Gervase Phinn, retired Major General Christopher Callow CB OBE, double Olympic medalist Nick Gillingham, educationalist Sir John Jones, wildlife artist Dr Jeremy Paul, former Secretary of State for Education Alan Johnson MP, TV personality Shobna Gulati and actor of ‘Harry Potter’ fame Warwick Davies. The CU Trust Chancellor is the children's author Michael Morpurgo. Children's University Patrons include Lord Lingfield, children's authors Hilary Robinson and Robert Muchamore, Brightside's Dr Tessa Stone, Fondazione Palazzo Strozzi Director General Dr James Bradburne, Liberty Director Shami Chakrabarti and virtuoso cellist Julian Lloyd Webber.

CU Trustees include Trust founders Sir David Winkley and National Education Trust Chair Richard Howard as well as Professors Mick Waters and Sonia Blandford, Reverend Sarah Hayes, the BBC's Head of Outreach Alec McGivan and the BBC's Editor Public Space Broadcasting Dr Anita Bhalla, Solicitor, Broadcaster and erstwhile General Manager at Celtic Football Club Jock Brown and CU Trust Chair Dr Sandy Bradbrook.

Consecutive independent evaluations of the Children's University by Professor John MacBeath of the University of Cambridge recognise that “*Children's University pupils attend better by virtue of the activities which enhance their school experience ... achieve better by virtue renewed self-confidence in their own potential ... enjoy learning more because they extend their repertoire of interests and see learning in a new light.*” The fourth evaluation of the Children's University (2013) was published in January 2013¹.

Included in this edition of *Achievements and Developments* are key achievements of the CU Trust thus far and what it intends to do in the next year, as well as a ‘CU by Numbers’ section - we are pretty certain you will be impressed by our numbers and our plans - and not just in the British Isles but including the Netherlands, Estonia, Portugal, Australia, Malaysia, Singapore, China, India, Belize and the USA ...! Enjoy!

CU Trust Trustees

Dr Sandy Bradbrook
Dr Anita Bhalla
Professor Sonia Blandford
Jock Brown
Rev Sarah Hayes
Richard Howard
Alec McGivan
Professor Mick Waters
Sir David Winkley

Dr Sandy Bradbrook
Chair, CU Trust

Ger Graus
Chief Executive, Children's University

¹ ‘Evaluation of the Children's University 2012 – Fourth Report’, Professor John MacBeath, University of Cambridge, January 2013 (ISBN: 978-0-9561319-8-0)

Achievements and Developments January 2013

Participation

- By the end of 2007 there were 9 local CU centres in England, all with a clear focus on challenging socio-economic deprivation. **Five years later, at the end of 2012, there were 90 local Children's Universities in membership in England** including the Service Children's Education Schools CU. This represents an increase of 81 centres or nearly 1,000% since the Children's University was founded in 2007. Organisations taking the lead in managing local CU centres include Higher and Further Education Institutions, Academies, Free Schools, schools collaboratives and learning partnerships, charities and trusts, local authorities and private sector partners.
- ✓ **The CU Trust's growing presence in Scotland, the Isle of Man, Northern Ireland and Wales means that our total number of CU centres across the British Isles stands at 116 as of 1st January 2013.**
 - **Our aspiration is to have 100 CUs in England by April 2015**, an increase of a further 10 local centres on the 2012 figures. The 'Children's University Map' already evidences significant progress towards this target - we have received some 20 expressions of interest for possible local CU development to date.
 - In addition **we expect our growing presence in the Isle of Man, Northern Ireland, Scotland and Wales to total a further 30 local CUs by April 2015.**
 - ✓ **59 of the 86 most deprived areas of England² - or 70% - now have CU provision;** all other CU centres are focused on local contextual deprivation.
 - **A further 5 Neighbourhood Renewal Unit areas will be targeted in England for inclusion during 2013-15.**
 - ✓ **International CU Trust development is now in progress in the Netherlands, Portugal, Australia, Malaysia and Singapore with further expressions of interest from Estonia, Italy, India, China, Belize and the USA.** This is in addition to the CU work undertaken with Service Children's Education and its schools across the globe.



Ethan Lamb (Middlesbrough CU) with the 200,000th CU Passport To Learning

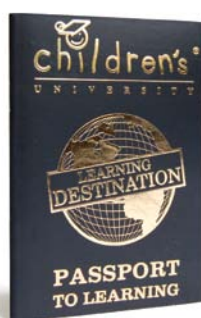
"The Children's University has been invaluable in raising standards across the school."

- In addition to the already existing CUs in the Netherlands and Australia **we would like to see the establishment of a CU Trust presence as a social franchise in at least another 3 nations by April 2015** including China and/or India. Further international growth is anticipated over time.
- ✓ **During 2012 105,000 children took part in 2,625,000 hours of CU learning in England** - an increase of 5,000 children and 575,000 hours of additional provision from 2011. By the end of 2012, 18,000 children in the Isle of Man, Scotland, Northern Ireland and Wales had taken part in 240,000 hours of CU learning activities. **The British Isles totals for 2012 are therefore that nearly 125,000 7 to 14 year olds took part in almost 3,000,000 hours of CU learning.**
 - **By April 2015 we aim to annually engage 115,000 children aged 7-14 years in 3,500,000 hours of CU learning in England alone.** Figures in the Isle of Man, Scotland and Wales are also expected to increase significantly whilst Children's University activity will grow in Northern Ireland. **Across the British Isles we expect there to be 150,000 children participating in nearly 4,500,000 hours of CU learning by April 2015.**
 - **In the developing CUs in Europe and the rest of the world we anticipate by April 2015 the number of children to exceed 20,000 participating in a minimum of 500,000 hours of CU learning annually.**
 - **By April 2015 we would therefore expect a total worldwide participation of 170,000 children in nearly 5,000,000 hours of CU learning.**



Passports To Learning

... at ...



Learning Destinations

... lead to ...



Certificates and Graduations

² Neighbourhood Renewal Unit (NRU) areas www.neighbourhood.gov.uk

“Children who participate in CU activities have as a consequence better attendance records than children in the same schools who do not participate. This has been a consistent finding from 2007 to the present.”¹

- ✓ **The CU *Passport To Learning* was developed in 2009 and 250,000 passports were issued by the end of December 2012.** The *Passport To Learning* engages children individually as members of the Children's University and encourage them to access a wide range of high quality accredited learning at CU *Learning Destinations*. Each child, with his or her own passport, collects 'stamps' toward the award of Children's University Certificates.
- **We aim to have issued 500,000 passports in England alone by April 2015. Across the British Isles, Europe and the rest of the world we expect this figure to exceed 600,000.**
- ✓ **A CU electronic passport or *E-Passport* has been developed during 2011** and is now available to assist schools in Children's University information management and provides evidence during Ofsted inspection visits. The *E-Passport* works alongside the *Passport To Learning* linking in with school management information systems and reducing bureaucracy. It also provides a vehicle for a 'virtual' CU enabling the participation of amongst others Looked-After-Children.
- **By April 2015, the aim is for 50,000 individual *E-Passport* licenses to be in use in schools and Academies in England. Worldwide we expect this figure to exceed 100,000.**



Rebecca dances at Kelvin Grove Art Gallery and Museum – a CU Learning Destination

“As a Headteacher I think the work you have done with the Children's University is stunning and a profound testimony to your skills and talents but above all your values.”

Partnerships

- ✓ **During 2012 the Children's University worked through its local centres with 3,000 schools and Academies in England**, including primary, secondary and special schools. In the Birmingham CU the partnership includes the King Edward Foundation (of Independent and Grammar Schools).
- **For 2013-15 the aim is to engage with 3,500 schools, Academies and Free Schools in England.**
- ✓ **The CU has made engagement with Higher Education a priority to raise the aspirations of children.** An audit in December 2012 revealed that all CUs worldwide had a substantial link with a total of 72 different Higher Education Institutions including Teacher Training as well as 39 Further Education Institutions.
- **During 2013-15 all local CU centres worldwide will continue to develop tangible links to Higher or Further Education Institutions, and particularly Teacher Training, with a clear focus on outcomes for children.**
- ✓ **In excess of 5,000 *Learning Destinations* have been validated by CU over the last three years**, including 2,800 'restricted' *Learning Destinations*

“My mum is so proud of me!”

- ✓ **like after-school clubs, as well as 2,200 public *Learning Destinations*** such as Higher and Further Education Institutions, museums, libraries, galleries, theatres and stately homes - for example Chatsworth House in Derbyshire, Millennium Point in Birmingham, the Peak District National Park, the Wedgwood Museum in Stoke-on-Trent, Natural History Museum, the Manx Wildlife Trust, the Royal Parks Foundation, the Houses of Parliament and also First News, B&Q, ClassMovies, Scottish Power and the BBC and internationally the Kunsthalle in Bielefeld (Germany) for Service Children's Education Schools, and even the Palazzo Strozzi in Florence (Italy).
- **By April 2015 we aim to have in excess of 3,000 public *Learning Destinations* worldwide** published on www.childrensuniversity.co.uk
- ✓ **A new website www.childrensuniversity.co.uk was launched as part of our 5th birthday: 16th April 2012.** The development of the new website was funded by Fidelity Foundation. The website will provide easy access to *Learning Destinations*, CU networks and a 'Bank of Resources' for and by local CU centres, including CU Lectures and Master Classes.
- **Over the next two years the website will be developed further** and will include access to a *Learning Destination* 'App'

“Achievement is significantly better at Key Stages 1 to 3 for children who participate in Children's University compared with non-attenders⁴”



Michael Morpurgo
children's author and
CU Trust Chancellor

- ✓ To further strengthen links with universities, the new initiatives of **CU Lectures and CU Chancellors and Patrons were introduced** in December 2009. CU Chancellors and Patrons act as figureheads, role models and ambassadors for local CU centres - and include university academics, Vice Chancellors, senior figures from business and local government, broadcasters, sports personalities, actors and authors. The CU Trust's Chancellor is the children's author Michael Morpurgo. CU Lectures aim to raise the aspirations of children by giving them the opportunity to experience a tailored lecture delivered by university students, staff or other providers often in a Higher Education setting.

Curriculum and innovation

- ✓ The range of curriculum provision has developed significantly in the last year. Examples of provision include: *Outdoor and Adventure, Expo Enterprise Studies, Robotics, Masterchef, Nature Detective Trail, Museum Club* and the national *Summer Reading Challenge* in 4,000 libraries across the British Isles. Arts-based projects are promoted through the development of partnerships such as those with Stagecoach, Shakespeare 4 Kidz, In Harmony, as well as the Kunsthalle (Bielefeld), the University of Paderborn (Germany), ClassMovies (Australia) and the Palazzo Strozzi (Italy). Local CUs have elements of the expressive and creative arts as part of their provision. 2012 developments have included BBC Visitor Centres and Big Screens, First News Junior Journalists and B&Q's Kids Can Do It and Job Done.



“I love the lectures!”

- During 2013-15 we will continue to develop **CU Lectures, CU Master Classes and Seminars into a nationally recognised initiative** whilst encouraging all local Children's University centres to appoint local Chancellors and Patrons.

In 2011 we started to pilot the expansion of CU provision to 5 and 6 year olds with their families (and carers). 7,200 5 and 6 year olds participated in the pilot for 76,500 hours of CU learning activities.

- ✓ During 2012 in excess of 11,000 5 and 6 year olds with their families (and carers) took part in more than 115,000 hours of CU learning. One third of all local CU centres already involve mentors and volunteers as part of their provision.

- ✓ At the 4th annual CU conference in December 2011 the **CU Volunteering scheme³** and its **Passport To Volunteering** were introduced. In a number of local CU centres post-14 CU alumni are now involved in managing and delivering the Children's University; this development is linked to the Duke of Edinburgh Award scheme and will in future be linked to the Higher Education Achievement Record.

- Both projects will continue in 2013-15 and Case Stories will be published on www.childrensuniversity.co.uk



- Curriculum development and innovation will continue during 2013-15 as will the further development of learning partnerships with organisations such as the **BBC, ClassMovies, B&Q, Haven Holidays, Nationwide, First News, Random House Children's Publishers, Free-Range Universities** and the Ministry of Defence as part of the Service Children's Education CU. Examples of what works really well and why will be published on www.childrensuniversity.co.uk. We will also begin to address aspects of e-learning and virtual learning.

³ 'Planning for Volunteering – Guide to Children's University Volunteering' by Ger Graus and Lynne Upton, Children's University and John MacBeath, University of Cambridge, 2011 (ISBN: 978-0-9561319-6-6)

⁴ 'Evaluation of the Children's University 2010 – Third Report', Professor John MacBeath, University of Cambridge, January 2011 (ISBN: 978-0-9561319-4-2)



“CU engaged children attain more highly than their non-CU counterparts and there is a positive correlation between the length of time children are involved with CU activities and their performance tests and exams.”¹”

Quality assurance

- ✓ The Children's University has developed a robust quality assurance framework, *Planning for Learning*⁵, to ensure that the highest quality of learning is evident in all CU activities and in all learning provision at *Learning Destinations* accredited by the CU across the British Isles and beyond.
- ✓ Since April 2012, **350 CU Planning for Learning Validators have been trained to quality assure Learning Destination provision, totaling an 'army' of 1,250 CU Validators since 2009.**
- **By April 2015 at least a further 750 CU Validators** will have been trained to provide a total capacity of
- **2,000 in England and the rest of the British Isles.** As part of our international developments, CU Validators will also be trained over the next year or so.
- **Planning for Learning will continue to provide the quality benchmark for Learning Destinations and local CU centres' provision.**
- ✓ The Children's University has also developed a comprehensive organisational quality assurance process for its centres, *Planning for Excellence*⁶, published in 2010. All local CUs will be registered for the programme and 55 in England have already reached Emerged, Established or Advanced status.
- **All local CUs currently registered are expected to reach at least the first phase of the organisational quality assurance, Emerged status, in the next 12 months.** This aspect of CU quality assurance will also apply internationally.

In December 2011 the Children's University won the Directory of Social Change Award – Everyday

- ✓ **Impact: New Enterprises. During 2012 the CU Trust won the Third Sector Excellence Award, was Highly Commended by The Charity Awards, was shortlisted for the Charity Times Awards and Children and Young People Now Awards.**

“Congratulations on a job well done and as a parent I am happy to spout off to all and sundry the benefit the Children's University brings the children and our wider community.”



Project funding and inward investment

- ✓ **Since 2007 the total in income procured by the CU Trust is £4,252,265. This includes £1,466,725 (or 35%) of non-government funding** through external grants, donations, sponsorship and income procured. Major funding partners have included Sutton Trust, JP Morgan, Nationwide, Fidelity Foundation, the Garfield Weston Foundation and the Charles Dunston Charitable Trust.
- ✓ **Grants awarded by the CU Trust since 2007 total £1,603,098 to 68 local CUs** – averaging £23,575 each. Grants awarded are either for start-up or
- ✓ **expansion funding. Every £1 of CU Trust project funding has generated £2.69 of local investment in CU centres** from local government, schools, Further and Higher Education and business, **totalling £4,312,334** since 2007. All CU centres which received funding are now self-sustaining.
- ✓ **The average Children's University grant-funded child-per-hour cost for the entire period between 2007 and 2012 was £1.54.** During 2007 and the early years of the CU Trust this figure was £2.95 per hour per participating 7 to 14 year old.
- **The CU Trust will continue to target project funding at NRU areas and other areas with contextual relative deprivation.** We also aim to at least **match our achievement in the last year of generating £2.69 of inward investment in local Children's University provision for every £1 of project funding** support received from the CU Trust.

⁵ 'Planning for Learning – A Framework for Validating Learning' by John MacBeath, University of Cambridge, and Ger Graus, Children's University, 2011 (ISBN: 978-0-9561319-0-4)

⁶ 'Planning for Excellence – Children's University Handbook for Organisational Quality Assurance' by Ger Graus, Peter Eavers, Children's University and Joanne Moore, Quality in Study Support and Extended Services, 2010 (ISBN: 978-0-9561319-1-1)

"The genius of the Children's University is not only in exploiting the 'where' but in asking the 'why' and the 'why not' questions. Why not find ways of exploiting the potential resource for learning of cultural repositories such as museums but also the less evident resources of an airport, for example?"

Other plans for 2013-15:

- **Further develop the website**
www.childrensuniversity.co.uk to include: *Learning Destinations*, signposting of learning provision and web-links to other online learning; the publication of 'Case Stories' of what works really well and why; 'broadcasting' CU Lectures and providing further information for local centres on leadership, management, including CU Chancellors and volunteering ... and the development of a CU *Learning Destination* 'App'.
- **Continue to expand CU provision** by providing CU access for 5 and 6 year olds, focusing specifically on family learning (including carers), working in partnership with organisations from the voluntary, community and business sectors, we also seek to provide 'virtual' CU learning environments for, amongst others, Looked-After-Children.



"Achievement also encompasses what has been realised by the CU itself, measured by its growth and outreach over five years".

- **Continue the CU Volunteering scheme** including the *Passport To Volunteering* CU-wide, (inter)nationally and locally take a lead in the governments' 'Big Society' and 'National Citizenship' agendas and achieve greater synergy with the Higher Education sectors.
- **Widen the CU network of partnerships** to enhance the quality of provision for children, particularly evidenced through the *Learning Destinations* and CU Lectures, Master Classes and Seminars wherever Children's University development takes place.
- **Continue support for (inter)national local CU centres** through (inter)national and regional meetings, annual conferences, enabling peer mentoring and sharing of good practice. **CU training**

will also continue, specifically in the areas of *Planning for Learning*, *Planning for Excellence*, the *E-Passport* and the CU Volunteering scheme.

"Going to university made me and my parents really proud. Like seeing me in a cap and gown. My mum said she never thought she would see inside a university. It just makes me feel proud."

- **Engage further in research and evaluation** through Professor John MacBeath of the University of Cambridge, the Department for Education and other agencies worldwide whose combined work will continue to contribute to the CU Trust's profile. The next evaluation report on the work of the Children's University world-wide will be published in 2015.
- **Publish CU Trust, (inter)national and local newsletters and examples of "...what works..." in 'Case Stories'** in areas such as: CU management, curriculum innovation; Higher and Further Education partnerships; leadership and management in CU schools and children's involvement in directing their own learning, evaluation ...
- **Raise aspirations and improve attainment and achievements specifically in English, Mathematics and ICT** in the first instance of the most able 9-14 year olds **through the introduction of the Children's University Challenge centres (CUC)** in partnership with the **Sutton Trust** which will be run in partnership with Higher Education and Teacher Training Institutions through existing local CUs. The CU Trust will actively seek to procure external funding and support to deliver this aspect. In future years, the CUC programme may seek to extend its provision beyond the original 'core' offer.
- **Raise the profile of the work of the Children's University and** continue to **generate income and procure funding** through membership and a range of other sources to offset the increases in costs essential to its growth. The appointment in 2012 of our CU Fundraising Manager and deployment of Publicity and Marketing Consultants will aid significantly in the CU Trust's capacity building.
- **Further progress the development of the CU Trust's international presence in particular through social franchising** focusing specifically on the CU Trust's core principles, aims, objectives, anticipated outcomes, quality assurance and delivery of the Children's University framework within (inter)national, regional and local contexts.
- **For any further ideas (and there will be many!) please visit** www.childrensuniversity.co.uk

7 'Evaluation of the Children's University 2008 – First Report', Professor John MacBeath, University of Cambridge, December 2008

The 'why' Answer!

Since 2007 the Children's University (CU) Trust has been supported by many organisations - local, regional, national and international, small and large, from the public, voluntary and private sectors to support our learning and, through funding, support our development. Funding partners have included JP Morgan, Garfield Weston Foundation, Nationwide, Fidelity Foundation and the Charles Dunstone Charitable Trust. Here is a further selection of our friends and what some have had to say about working with us ...



"CU is about providing non-privileged young people with enriching out-of-school opportunities that better off peers have as a matter of course. When we first became involved there were fewer than 10 centres, however, we saw huge potential for growth. Now there are over 100 reaching thousands of pupils; a great return on our investment."



"CU was granted £700,000 over the period 2011-13 to provide greater access to high quality, exciting and innovative learning experiences for children and young people outside the traditional school day - through establishing new Children's Universities and develop existing ones."



Sir Peter Lampl of the Sutton Trust receives the 250,000th CU Passport To Learning as a big 'Thank-You' from all of us at the Children's University

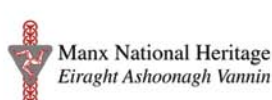


"Brodies LLP is committed to making a positive contribution to the communities in which we work and live. We are delighted to support CU because we share its commitment to raising ambition, sparking the imagination of young people and making education in the broadest possible sense available to all children, regardless of background."



"As an industry that is looking towards the next generation to ensure a sustainable, secure energy supply, youth engagement and the development of employability skills is close to Scottish Power's heart. Our focus of raising the aspirations of all young people has resulted in a wide range of programmes enabling them to play a part in the future of this every developing sector. Our partnership with the Children's University is therefore a natural fit in creating greater awareness for the energy leaders of tomorrow and providing them with the opportunity to experience success right from the start of their career journey."

Our growing list of (inter)national learning partners include ...



CU by numbers..

£8,564,599

the total amount of income procured since 2007, both nationally and locally, as a direct result of CU Trust grants to local CU centres

£4,321,334

the amount locally generated as a direct result of CU Trust grants to local CU centres

£4,252,265

the amount of income procured nationally by the CU Trust since 2007. This includes £1,466,725 (or 35%) of non-government funding

2,625,000

hours of CU learning in England in 2012 by 7–14 year olds

£1,603,098

in CU Trust grants awarded to 68 local CUs for start-up or expansion funding, averaging £23,575 per grant. All CU centres which received funding are now self-sustaining

250,000

Passports To Learning in use since 2009

240,000

hours of learning in Scotland, Wales and the Isle of Man for 18,000 CU participants

136,000

5 to 14 year old CU participants in the United Kingdom in 2012 including 11,000 5 and 6 year olds, with their families (and carers), 105,000 7-14 year olds in England and a further 20,000 7-14 year olds in the rest of the United Kingdom for nearly 3,000,000 hours of learning

32,500

The number of bronze, silver and gold awards to Children's University graduands in 2012

7,500

Passports to Learning issued monthly during 2012

5,000

Learning Destinations in total of which 2,200 are publicly accessible by children with their *Passport To Learning*. Others are 'restricted' *Learning Destinations* such as after-school clubs

3,000

schools and Academies are engaged with CU in England alone

1,250

CU Validators trained to quality assure *Learning Destinations* across the family of CUs

111

Higher and Further Education Institutions working with the CU in England, including Cambridge and Oxford Universities

90

local CU centres in England and a further 25 across the Isle of Man, Northern Ireland, Scotland and Wales

20

is the number of nations involved in the Children's University (CU) Trust in January 2013, including England, Isle of Man, Northern Ireland, Scotland, Wales, Estonia, Italy, the Netherlands, Portugal, Republic of Ireland, Australia, Belize, China, India, Indonesia, Malaysia, Republic of South Africa, Singapore, Sri Lanka and the USA. This represents a CU Trust presence on 4 continents.

10

key findings in Professor John MacBeath's (University of Cambridge) *Evaluation of the Children's University 2012*¹ evidencing the difference CU learning makes to children's achievements and standards

9

local CU centres in total by the end of 2007

5

Children's University's age in 2012 (only slowly growing up!)

£2.69

of inward investment in local CU provision for every £1 of CU Trust project funding

2

imPOSSIBLE is two letters too long at the Children's University

£1.54

the average Children's University grant-funded child-per-hour cost over the entire period from 2007 to 2012

1

the individual child we try to get it right for – EVERY TIME!

Children's University Chancellors, Patrons and other friends ...



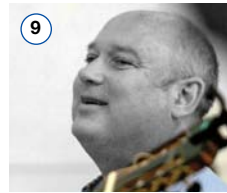
Professor Carla Rinaldi 1
Reggio Children



Children's author
Michael Morpurgo 2



Lord Lingfield 3



Julian Lloyd Webber 4



Professor Mick Waters 5



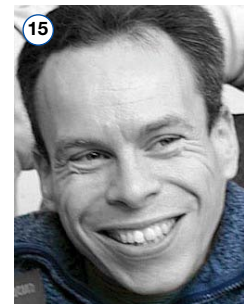
Shobna Gulati 6
Actor of Coronation
Street fame



Dr James Bradburne 7
Director General
Palazzo Strozzi Florence



Children's author
Hilary Robinson 8



Author
Louis de Bernières 9



Olympic medallist
Nick Gillingham 10



Head of BBC Outreach
Alec McGivan 11



Professor John MacBeath 12
University of Cambridge



Sir Tim Brighouse 13



Director of Liberty
Shami Chakrabarti 14



Warwick Davies 15
Actor of 'Harry Potter' fame



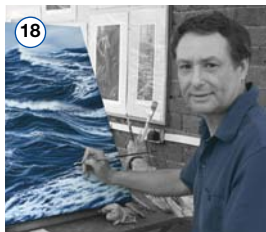
Scientist and broadcaster
Professor Iain Stewart 16



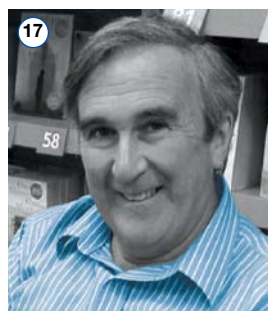
Author **Gervase Phinn** 17



Wildlife artist
Dr Jeremy Paul 18



Children's author
Robert Muchamore 19



Alan Johnson MP 20



Conductor and RNCM
student **Duncan Ward** 21



© CU Trust

The Children's University™ logo is a registered trade mark and the Children's University™ name is a trade mark of CU Trust, a registered charity (no. 1118315) and a company limited by guarantee. Registered in England and Wales (no. 6018900).

"It's like a club for developing your talent that other children also belong to and that is fun."

As I inhabit the worlds of the grown-ups and of the children I can speak up for what the Children's University tries to achieve."

Michael Morpurgo

Children's University (CU) Trust
c/o Royal Northern College of Music
124 Oxford Road
Manchester
M13 9RD
United Kingdom

Tel: +44 (0)161 907 5389
Fax: +44 (0)161 907 5391

www.childrensuniversity.co.uk
contactus@childrensuniversity.co.uk