



# Achievements & Developments

“Children can only  
aspire to what they know exists ...!”



Winner of the 2011



## ENGLAND

● EXISTING ● PLANNED

- 1 Andover
- 2 Barnet
- 3 Barnsley
- 4 Birmingham
- 5 Blackburn
- 6 Blackpool
- 7 Bolton
- 8 Bournemouth
- 9 Bradford
- 10 Brent
- 11 Brighton & Hove
- 12 Bristol
- 13 Bromley
- 14 Bury
- 15 Cambridgeshire
- 16 Cheshire West
- 17 Chester
- 18 Chorley
- 19 Cornwall
- 20 Coventry
- 21 Croydon
- 22 Cumbria
- 23 Darlington
- 24 Derby
- 25 Derbyshire
- 26 Devon
- 27 Doncaster
- 28 Dudley
- 29 Durham
- 30 East Riding
- 31 Enfield
- 32 Essex
- 33 Fylde
- 34 Gateshead
- 35 Gloucestershire
- 36 Gloucestershire Virtual School
- 37 Greenwich
- 38 Halton
- 39 Hammersmith & Fulham
- 40 Hartlepool
- 41 Herefordshire
- 42 Hull
- 43 Isle of Wight
- 44 Kent
- 45 Kirklees
- 46 Knowsley
- 47 Lambeth
- 48 Leeds
- 49 Leicestershire
- 50 Leicestershire
- 51 Lincolnshire
- 52 Liverpool
- 53 Manchester
- 54 Medway
- 55 Middlesbrough
- 56 Milton Keynes
- 57 New Forest
- 58 Newcastle upon Tyne
- 59 Newham
- 60 Norfolk
- 61 North Hertfordshire
- 62 North Lancashire
- 63 Northamptonshire
- 64 Northumberland
- 65 Nottingham
- 66 Nottinghamshire
- 67 Oldham
- 68 Oxford
- 69 Oxfordshire
- 70 Peterborough
- 71 Plymouth
- 72 Portsmouth
- 73 Preston
- 74 Reading
- 75 Redcar & Cleveland
- 76 Rochdale
- 77 Rotherham
- 78 Rutland
- 79 Salford
- 80 Sandwell
- 81 Scarborough
- 82 SCE Schools
- 83 Sefton
- 84 Selby
- 85 Sheffield
- 86 Shropshire
- 87 Slough
- 88 Solihull
- 89 Somerset
- 90 South Hertfordshire
- 91 Southampton
- 92 Southend
- 93 Southwark
- 94 St Helens
- 95 Staffordshire
- 96 Stockton-on-Tees
- 97 Stoke-on-Trent
- 98 Suffolk
- 99 Sunderland
- 100 Tauheedul Schools & Academies
- 101 Telford & Wrekin
- 102 Torbay
- 103 Wakefield
- 104 Walsall
- 105 Warrington
- 106 Warwickshire
- 107 West Lancashire
- 108 West London
- 109 West Sussex
- 110 Wigan
- 111 Wirral
- 112 Wolverhampton
- 113 Worcestershire
- 114 Wyre
- 115 York

## ISLE OF MAN

- EXISTING ● PLANNED
- 1 Isle of Man

## NORTHERN IRELAND

- PLANNED
- 1 Belfast
  - 2 Derry
  - 3 Lisburn

## SCOTLAND

- EXISTING ● PLANNED
- 1 Aberdeen
  - 2 Dundee
  - 3 East Lothian
  - 4 Glasgow
  - 5 Mid Lothian

## WALES

- EXISTING ● PLANNED
- 1 Anglesey
  - 2 Blaenau Gwent
  - 3 Bridgend
  - 4 Cardiff
  - 5 Carmarthenshire
  - 6 Ceredigion
  - 7 Conwy
  - 8 Denbighshire
  - 9 Flintshire
  - 10 Gwyneth
  - 11 Monmouthshire
  - 12 Neath Port Talbot
  - 13 Newport
  - 14 Pembrokeshire
  - 15 Powys
  - 16 Rhondda Cynon Taff
  - 17 Swansea
  - 18 The Vale of Glamorgan
  - 19 Torfaen
  - 20 Wrexham

## EUROPE

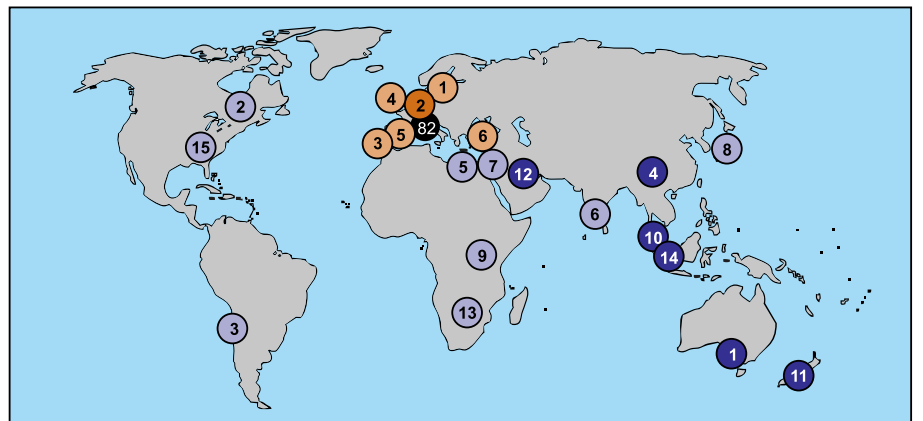
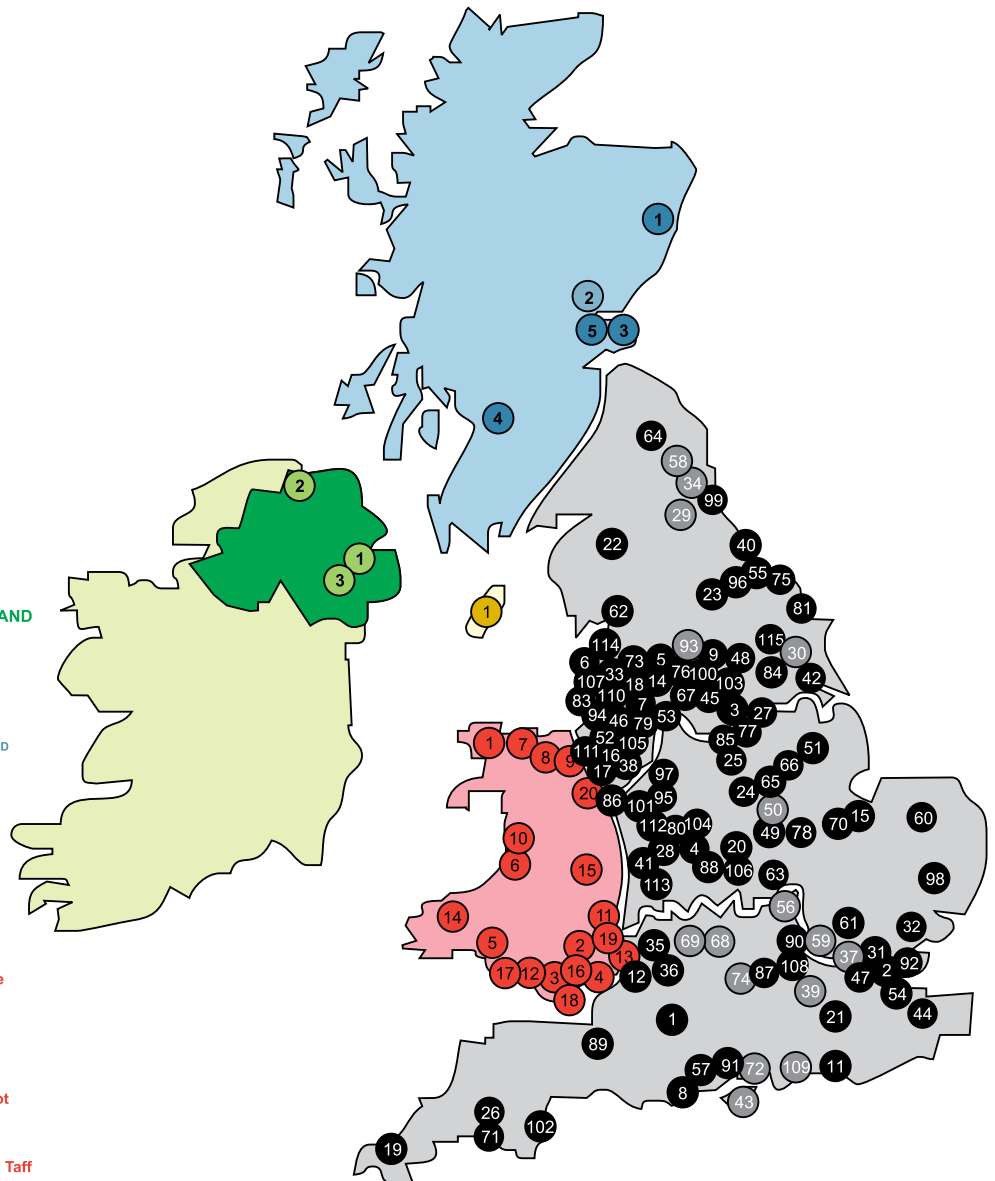
- EXISTING ● PLANNED
- 1 Estonia
  - 2 The Netherlands
  - 3 Portugal
  - 4 Republic of Ireland
  - 5 Spain
  - 6 Turkey

## REST OF THE WORLD

- EXISTING ● PLANNED
- 1 Australia
  - 2 Canada
  - 3 Chile
  - 4 China
  - 5 Egypt
  - 6 India
  - 7 Israel
  - 8 Japan
  - 9 Kenya
  - 10 Malaysia
  - 11 New Zealand
  - 12 Qatar
  - 13 Republic of South Africa
  - 14 Singapore
  - 15 USA

## Children's University Map 2014/15

work in progress...



82 CU Service Children's Education (SCE) Schools are in Belgium, Brunei, Canada, Cyprus, Falkland Islands, Gibraltar, Italy, The Netherlands and Turkey, with its head office in Germany.



## Introduction

### Welcome to the Children's University's Achievements & Developments 2014/15



**Dr Sandy Bradbrook**  
Chair



**Ger Graus**  
Group Chief Executive

In December 2006 the CU Trust was formed with the financial support of the Sutton Trust and the Department for Education (DfE) in England. The Children's University (CU) was launched shortly afterwards in April 2007 following the appointment of Chief Executive Ger Graus who set up the head office in Manchester. The CU Trust's Chair is Dr Sandy Bradbrook. Since 2007, other funding partners have included JP Morgan, Nationwide, Fidelity Foundation, Garfield Weston Foundation, Charles Dunstone Charitable Trust, ScottishPower Foundation, Esmée Fairburn Foundation, Education Endowment Foundation and the Cabinet Office.

The Children's University aims to promote social mobility by providing high quality, exciting and innovative learning activities and experiences outside normal school hours to children aged 7-14 (and 5 and 6 year olds with their families) and engaging the wider communities as learning partners in the realisation of this. At the heart of its work is the ambition to raise aspirations – "... *aspire to inspire ...*" – boost achievement and foster a love of learning, so that young people can make the most of their abilities and interests, regardless of the background into which they were born. Although open to all, the CU aims particularly to reach children and young people facing socio-economic and educational disadvantage through the targeting of grants to, and the promotion of activities in, areas of deprivation. It is here, we believe, that the benefits of high quality provision and opportunities will be felt most.

An important principle of the Children's University is that participation is voluntary. It is intentionally something other than school - with a different feel, different activities and often a different location, staff and peer group. So the ultimate testament to the effectiveness of the Children's University is that young people give up their time to attend and that they begin to realise that learning can be "... *a satellite navigation system to better places in life ...*". The significant increase in numbers over the past seven years shows they do indeed attend, and the comments and recommendations of parents, teachers and the children themselves show that they are engaged and inspired too. Post-14 CU 'Alumni' are now also continuing to be involved in the running of the Children's University at local level ...

Children's University is on the cusp of transitioning into one of the largest out-of-school-hours and informal learning initiatives and has grown over 1,380% since its inception in 2007. We now have 125 operations spanning the length and breadth of the British Isles – England, Isle of Man, Northern Ireland, Scotland and Wales. In 2013 alone the Children's University counted 160,000 5-14 year olds across the British Isles as its members, participating in 4.3 million hours of voluntary learning in partnership with 3,500 schools. Including CU students

and their families we estimate that in 2013 the Children's University engaged with over 1.2 million participants. In the last 12 months we have also responded to growing international demand and franchised Children's University to partners in Australia, Singapore, Malaysia and the Netherlands with China, Qatar and New Zealand to be launched in 2014. Interest has also been noted from organisations in Chile, Egypt, Estonia, Israel, Kenya, Portugal, Republic of Ireland, Republic of South Africa, Spain, USA and Turkey. To experience a taste of the first ever graduation in Australia in 2013, please visit [www.youtube.com/watch?v=7Pczvc9AO2o&list=UU\\_o5XUDiTR6ibQK0\\_5M2DwA](http://www.youtube.com/watch?v=7Pczvc9AO2o&list=UU_o5XUDiTR6ibQK0_5M2DwA).

Each local Children's University has a link with a Higher Education Institution and is encouraged to appoint its own Chancellor. The Children's University (CU) Trust Chancellor is the children's author Michael Morpurgo. Local CU Chancellors include the author Louis de Bernières, retired Major General Christopher Callow CB OBE, double Olympic medalist Nick Gillingham, TV personality Shobna Gulati and actor of 'Harry Potter' fame, Warwick Davies. His Excellency Rear Admiral Kevin Scarce, Governor of South Australia, is the CU Australia Chancellor. Children's University (CU) Trust Patrons include Lords Lingfield and Putnam, children's author Hilary Robinson, Professor Mick Waters, Fondazione Palazzo Strozzi Director General Dr James Bradburne, Liberty Director Shami Chakrabarti and virtuoso cellist Julian Lloyd Webber.

CU Trustees include Trust founders Sir David Winkley and National Education Trust Chair Richard Howard, as well as Reverend Sarah Hayes, Headteacher Jill Robertson, the BBC's former Head of Outreach Alec McGivan and its former Editor Public Space Broadcasting, Dr Anita Bhalla, Solicitor, Broadcaster and erstwhile General Manager at Celtic Football Club Jock Brown and CU Trust Chair, Dr Sandy Bradbrook.

Consecutive independent evaluations of the Children's University by Professor John MacBeath of the University of Cambridge recognise that "*Children's University pupils attend better by virtue of the activities which enhance their school experience ... achieve better by virtue of the renewed self-confidence in their own potential ... enjoy learning more because they extend their repertoire of interests and see learning in a new light*". The fourth evaluation of the Children's University was published in January 2013<sup>1</sup>.

Included in this edition of *Achievements & Developments* are key achievements of the CU Trust thus far and what it intends to do in the next year, as well as a 'CU by Numbers' section - we are pretty certain you will be impressed by our numbers and our plans – enjoy!

**Dr Sandy Bradbrook**  
Chair, CU Trust

**Ger Graus**  
Group Chief Executive, Children's University

<sup>1</sup> 'Evaluation of the Children's University 2012 – Fourth Report', Professor John MacBeath, University of Cambridge, January 2013 (ISBN: 978-0-9561319-8-0)

"University  
of fun –  
a brilliant  
way to get  
children  
inspired."

The Sunday Times

### CU Trust Trustees

**Dr Sandy Bradbrook**  
**Dr Anita Bhalla**  
**Jock Brown**  
**Rev Sarah Hayes**  
**Richard Howard**  
**Alec McGivan**  
**Jill Robertson**  
**Sir David Winkley**



## Participation

By the end of 2007 there were 9 local CU centres in England, all with a clear focus on challenging socio-economic and socio-cultural deprivation.

- ✓ **During 2014/15 we will be working with 100 local Children's Universities in England** including the Service Children's Education Schools CU. This represents an increase of 91 centres or 1,010% since the start of the Children's University in 2007. Organisations taking the lead in managing local CU centres include Higher and Further Education Institutions, Academies, schools collaboratives and learning partnerships, charities and trusts, local authorities and private sector partners. **The CU's growing presence in Scotland, the Isle of Man, Northern Ireland and Wales means that our total number of CU centres across the British Isles for 2014/15 stands at 125.**

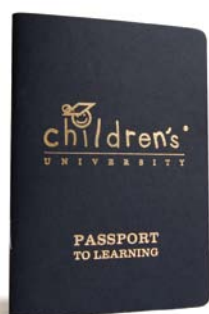
The 'Children's University Map' clearly evidences our progress and also points to the areas from where we have received some 35 local, national and international expressions of interest for possible

- CU development. **We aim to grow further the CU presence in England, achieve widespread coverage in Northern Ireland, the Isle of Man, Scotland and Wales, extend our presence in Australasia, Asia and Europe, and respond to interest from elsewhere in the world.**
- ✓ **63 of the 86 most deprived areas of England<sup>2</sup> - or 73% - now have CU provision;** all other CU centres are focused on local contextual deprivation.
- **In the development of both new and existing CU centres, we will continue to focus on areas of socio-economic and socio-cultural deprivation.**
- ✓ **International CU Trust development is now in progress in Australia, China, Malaysia, New Zealand, Singapore, Qatar and the Netherlands with further expressions of interest from Chile, Egypt, Estonia,**

**"As Headteacher I really want to take the attitude that: success out of school = success in school. With the high percentage of boys in our school this has been invaluable in raising standards across the board."**

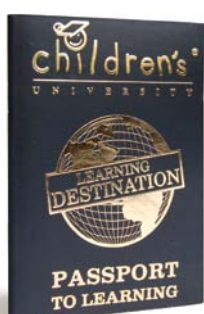
**Israel, Kenya, Portugal, Republic of Ireland, Republic of South Africa, Spain, USA and Turkey.** This is in addition to the CU work undertaken with Service Children's Education and its schools across the globe.

- In addition to the already existing CUs in Australia, Malaysia, Singapore and the Netherlands **we would like to see the establishment of a CU Trust presence as a social franchise in at least another 3 nations by April 2015.** Further international growth is anticipated over time.
- ✓ **During 2013 160,000 children took part in 4,300,000 hours of CU learning across the British Isles** - an increase of 26,000 children and 1,320,000 hours of additional provision from 2012. This is a growth of 515% child participants and 1,383% hours of CU learning since 2007.
- **By April 2015 we aim to annually engage 185,000 children in 5,350,000 hours of CU learning across the British Isles.**
- **In the developing CUs internationally we anticipate that the number of participating children will exceed 20,000 by April 2015 for a minimum of 500,000 hours.**
- **By April 2015 we would therefore expect a total worldwide participation of 205,000 children in nearly 6,000,000 hours of CU learning.**



Passports To Learning

... at ...



Learning Destinations

... lead to ...



Certificates

... and ...



Graduations

<sup>2</sup> Neighbourhood Renewal Unit (NRU) areas [www.neighbourhood.gov.uk](http://www.neighbourhood.gov.uk)





**“Children who participate in CU activities have as a consequence better attendance records than children in the same schools who do not participate. This has been a consistent finding from 2007 to the present.”<sup>1</sup>**

**“As a Headteacher I think the work you have done with the Children's University is stunning and a profound testimony to your skills and talents but above all your values.”**

- ✓ **The CU *Passport To Learning* was developed in 2009 and 300,000 passports were issued by the end of December 2013.** The *Passport To Learning* engages children individually as members of the Children's University and encourages them to access a wide range of high quality accredited learning at CU *Learning Destinations*. Each child, with his or her own passport, collects 'stamps' towards the award of Children's University Certificates.
- **We aim to have issued 400,000 passports globally by April 2015.**
- ✓ **A CU electronic passport or *E-Passport* was developed in 2011** and is available to assist schools in Children's University information management and provides evidence as part of self evaluation and during inspection visits. The *E-Passport* works alongside the *Passport To Learning* linking in with school management information systems and reducing bureaucracy. It also provides a vehicle for a 'virtual' CU enabling the participation of looked-after-children amongst others.

## Partnerships

- ✓ **During 2013 the Children's University worked with 3,500 schools and Academies across the British Isles**, including primary, secondary and special schools.
- **For 2014/15 the aim is to engage with 4,000 schools and Academies globally.**
- ✓ **The CU has made engagement with Higher Education a priority to raise the aspirations of children.** By December 2013 the Children's University had a substantial link with a total of 100 different Higher Education Institutions including Teacher Training as well as 55 Further Education Institutions worldwide.
- **During 2014/15 all local CU centres worldwide will continue to develop tangible links to Higher or Further Education Institutions, and particularly Teacher Training, with a clear focus on outcomes for children.**
- ✓ **In excess of 6,700 *Learning Destinations* have been validated by the CU since 2007**, including 3,500 'restricted' *Learning Destinations* like
- ✓ after-school clubs, as well as 3,200 public *Learning Destinations* such as Higher and Further Education Institutions, museums, libraries, galleries, theatres, stately homes, businesses and places of work. Examples include Chatsworth House in Derbyshire, the Manx Wildlife Trust, Kelvingrove Art Gallery and



Museum in Glasgow, the Royal Parks Foundation, the Houses of Parliament, First News, B&Q, British Science Association, Arts Award, Halfords, Haven Holidays, ScottishPower and the BBC and soon Birmingham Young Lawyers Association and PRIME legal work-experience programme along with the Old Bailey. Internationally, *Learning Destinations* include the City Sightseeing Tours worldwide, the Kunsthalle in Bielefeld (Germany) for Service Children's Education CU, the Petronas Towers in Kuala Lumpur (Malaysia), the Art Gallery of South Australia and Adelaide Zoo (Australia) and the Palazzo Strozzi in Florence (Italy).

- **By April 2015 we aim to have in excess of 4,000 public *Learning Destinations* worldwide published on [www.childrensuniversity.co.uk](http://www.childrensuniversity.co.uk).**

The current website [www.childrensuniversity.co.uk](http://www.childrensuniversity.co.uk) was launched as part of our 5th birthday on 16th April 2012. The development of the website was funded by Fidelity Foundation. The website provides easy access to public *Learning Destinations*, CU networks and a bank of resources for local CU centres.

- **During the next year the website will be developed further** taking account of the international dimension and to compliment this we will also have a *Learning Destination App*.



**"Achievement is significantly better ... for children who participate in Children's University compared with non-attenders."<sup>4</sup>**



**Elementary School LTD (Singapore), the Confucius International Education Group (China), CED Groep (Netherlands), the British Council (Qatar) and Reggio Children (Italy).** Examples of what works really well and why will be published on [www.childrensuniversity.co.uk](http://www.childrensuniversity.co.uk). We will also continue to address aspects of e-learning and virtual learning.

- ✓ **To further strengthen links with universities**, the initiatives of **CU Lectures and CU Chancellors and Patrons were introduced** in December 2009. CU Chancellors and Patrons act as figureheads, role models and ambassadors for local CU centres - and include university academics, Vice Chancellors, senior figures from business and local government, broadcasters, sports personalities, actors and authors. The CU Trust's Chancellor is the children's author Michael Morpurgo. CU Lectures aim to raise the aspirations of children by giving them the opportunity to experience a tailored lecture delivered by university students, staff or other providers often in a Higher Education setting.

## Curriculum and innovation

- ✓ **The range of curriculum provision has developed significantly in the last year.** Examples of provision include: Outdoor and Adventure, Expo Enterprise Studies, Robotics, Masterchef, Nature Detectives Trail, Museum Club and the Summer Reading Challenge in 4,000 libraries across the British Isles. Arts-based projects are promoted through the development of partnerships such as those with Stagecoach, Shakespeare 4 Kidz, Arts Award as well as the Kunsthalle (Bielefeld), the Art Gallery of South Australia (Australia) and the Palazzo Strozzi (Italy). Local CUs have elements of the expressive and creative arts as part of their provision. 2013 developments have included BBC Visitor Centres, First News 'Junior Journalists' and B&Q's 'Kids Can Do It', Halfords 'Bike Club' workshops, as well as Haven Holidays, English Heritage, the British Science Association, Surf Life Saving, Forestry Commission, Roosterbank, People's Dispensary for Sick Animals (PDSA) and the World Wide City Sight-Seeing Tours.



**"I love the lectures!"**

- **During 2014/15 we will continue to develop CU Lectures and CU Talks into an internationally recognised initiative** whilst encouraging all local Children's University centres to appoint local Chancellors and Patrons. New initiatives on the horizon are the Performing Arts and Music focused Children's Conservatoire and the Children's University Challenge focusing on extending the depth of learning provision within CU especially for highly able children.

In 2011 we started to pilot the expansion of CU provision to 5 and 6 year olds with their families (and carers).

- ✓ At the 4th annual CU Conference in December 2011 the **CU Volunteering scheme<sup>3</sup>** and its **Passport To Volunteering** were introduced. In a number of local CU centres post-14 CU 'Alumni' are now involved in managing and delivering the Children's University; this development is linked to the Duke of Edinburgh Award scheme. One third of all local CU centres already involve mentors and volunteers as part of their provision.



- **Curriculum development and innovation will continue during 2014/15** as will the **further development of learning partnerships** with organisations such as the
- **BBC, the Old Bailey, PRIME, KidZania as well as our international partners including the University of Adelaide (Australia), Astro Overseas Limited (Malaysia), St Joseph's Institution International**

<sup>3</sup> 'Planning for Volunteering – Guide to Children's University Volunteering' by Ger Graus and Lynne Upton, Children's University and John MacBeath, University of Cambridge, 2011 (ISBN: 978-0-9561319-6-6)

<sup>4</sup> 'Evaluation of the Children's University 2010 – Third Report', Professor John MacBeath, University of Cambridge, January 2011 (ISBN: 978-0-9561319-4-2)



**“CU engaged children attain more highly than their non-CU counterparts and there is a positive correlation between the length of time children are involved with CU activities and their performance tests and exams.”<sup>1</sup>”**

Both projects will continue in 2014/15 and Case Stories will be published on [www.childrensuniversity.co.uk](http://www.childrensuniversity.co.uk).

- **CU Learning Grants: to encourage new and innovative practice we have devised a small grants scheme whereby local CU children will be able to apply for funding to develop and pilot new learning.** Each of the projects will be showcased at the CU annual Conference and on the CU website, so that the world of CUs can benefit from the learning and replicate good practice. The most successful projects will be scaled across the network and sponsorship will be sought from the business world and elsewhere.

## Quality assurance

- ✓ **With Professor John MacBeath of the University of Cambridge the Children's University has developed a robust quality assurance framework, *Planning for Learning*<sup>5</sup>.** This ensures that the highest quality of learning is evident in all CU activities and in all learning provision at *Learning Destinations* accredited by the CU across the British Isles and beyond.
- ✓ Since April 2013, **440 CU *Planning for Learning* Validators have been trained to quality assure *Learning Destination* provision, creating an 'army' of 1,805 CU Validators.**
- **By April 2015 at least a further 395 CU Validators** will have been trained to provide a total capacity of
- **over 2,200 CU Validators in England and the rest of the British Isles.** CU Validation training also forms part of our international expansion.
- ***Planning for Learning* will continue to provide the quality benchmark for *Learning Destinations* and local CU centres' provision.**
- ✓ **The Children's University due-diligence includes a comprehensive organisational quality assurance process *Planning for Excellence*<sup>6</sup>,** published in 2010, in partnership with Quality in Study Support (QiSS). **All CU centres will be registered for the**

**“It's such a good programme for the children, and congratulations to all of them on a job well done. And thank you from me for the opportunity it has given my children.”**



**“My mum is so proud of me!”**

**programme and are expected to reach at least the first phase, 'Emerged' status, in their first 12 months.** This aspect of CU quality assurance will also apply internationally.

- ✓ **In March 2014, the Children's University won the Global Business Excellence Award.** In December 2011 the Children's University won the Directory of Social Change Award – Everyday Impact: New Enterprises. During 2012 the CU Trust won the Third Sector Excellence Award, the Children and Young People Now Early Intervention Award, was Highly Commended by The Charity Awards and was shortlisted for the Charity Times Awards.

## Project funding and inward investment

- ✓ **Since 2007 the total in income procured by the CU Trust is £5,531,177. This includes £2,361,177 (or 43%) of non-government funding** through external grants, donations, sponsorship and income procured. Major funding partners have included the Sutton Trust, JP Morgan, Nationwide, Fidelity Foundation, Garfield Weston Foundation, Esmée Fairbairn Foundation, Education Endowment Foundation, ScottishPower Foundation and the Charles Dunstone Charitable Trust.

<sup>5</sup> *Planning for Learning – A Framework for Validating Learning* by John MacBeath, University of Cambridge, and Ger Graus, Children's University, 2011 (ISBN: 978-0-9561319-0-4)

<sup>6</sup> *Planning for Excellence – Children's University Handbook for Organisational Quality Assurance* by Ger Graus, Peter Eavers, Children's University and Joanne Moore, Quality in Study Support and Extended Services, 2010 (ISBN: 978-0-9561319-1-1)





**“The genius of the Children's University is not only in exploiting the ‘where’ but in asking the ‘why’ and the ‘why not’ questions. Why not find ways of exploiting the potential resource for learning of cultural repositories such as museums but also the less evident resources of an airport, for example?”**

- ✓ **Grants awarded for start-up or expansion between 2007 and 2014 total £1,679,689. Every £1 of CU Trust project funding has generated £2.44 of local investment in CU centres** from local government, schools, Further and Higher Education and business. All CU centres which received funding are now self-sustaining.
- **The CU Trust will continue to target project funding at contextual relative deprivation. We also aim to at least match our achievement in the last year of generating £2.44 of inward investment in local Children's University provision for every £1 of project funding support received from the CU Trust.**
- **From 2014 the CU will develop CU Learning Grants to encourage new and innovative practice.**
- ✓ **The average Children's University child-per-hour cost for 2013/14 was £0.15.** During 2007 and the early years of the CU Trust this figure was £2.95
- ✓ **per hour per child. The average cost per child for 2013/14 was £4.06.**

- **Embrace digital learning** and develop e-learning provision to augment current face-to-face delivery thus extending the range of options available to CU students; this will also include continually developing the website and access to learning provision through the *E-Passport* and the development of a CU *Learning Destination* App.
- **Enhance CU learning provision and community engagement** by increasing the number of *Learning Destinations* and widen the CU network of partners to assist in the delivery of CU Lectures and CU Talks wherever Children's University development takes place.

**“It is good for you and you have something to do instead of staying at home. You get to learn new stuff and get to know all about universities. I want to go to university when I leave school ... I want to learn music.”**

**“Achievement also encompasses what has been realised by the CU itself, measured by its growth and outreach.”**



- **International expansion** is a key feature of our future plans and reflects the increasing demand from overseas markets.
- **Continue the CU Volunteering scheme** including the *Passport To Volunteering* CU-wide.
- **Engage further in research** and evaluation through Professor John MacBeath of the University of Cambridge and other partners worldwide. The next evaluation report on the work of the Children's University worldwide will be published in 2017.
- **Raise the profile of the work of the Children's University and continue to generate income and procure funding** through membership and a range of other sources to offset the increases in costs essential to its growth.
- **Raise aspirations and improve attainment and achievements specifically in English, Mathematics and ICT** in the first instance of the most able
- **9-14 year olds through the introduction of the Children's University Challenge (CUC) centres** in partnership with the Sutton Trust, Higher Education and through existing local CUs. The development of
- **an Arts and Music based Children's Conservatoire** is also on the radar.
- **For any further ideas (and there will be many!) please visit [www.childrensuniversity.co.uk](http://www.childrensuniversity.co.uk).**

## Other future plans:

- **Become a leading global brand** in terms of promoting and celebrating children's participation in high quality, innovative learning experiences outside the school day.
- **Enhance widening participation strategies** of Further and Higher Education Institutions globally to engage with primary and early-secondary aged children and their families.
- **Extend the range and ensure the relevance of all CU learning provision;** in particular, strengthen links with the world of work to raise awareness of different career options and help tackle future skills shortages.

7 'Evaluation of the Children's University 2008 – First Report', Professor John MacBeath, University of Cambridge, December 2008





## The 'why' Answer!

Since 2007 the Children's University (CU) Trust has been supported by many organisations - local, regional, national and international, small and large, from the public, voluntary and private sectors to support our learning and, through funding, support our development. Here is a selection of our partners and what some have had to say about working with us ...



*"CU is about providing non-privileged young people with enriching out-of-school opportunities that better off peers have as a matter of course. When we first became involved there were fewer than 10 centres, however, we saw huge potential for growth. Now there are over 100 reaching thousands of pupils; a great return on our investment."*



*"The Education Endowment Foundation (in partnership with the Cabinet Office) is funding Children's University to test the impact of social action activities on outcomes for disadvantaged pupils. This programme provides an exciting opportunity to test robustly the impact of extra-curricular activities on children's engagement and attainment, and wider skills such as motivation, confidence and team-working."*



*"The University of Adelaide is very fortunate to be the first to establish Children's University in Australia. Through the Children's University, the University of Adelaide has the opportunity to build a diverse local community of life-long learners with aspirations for higher education."*

MACFARLANES

*"Macfarlanes LLP is committed to making a positive contribution to the communities in which we work and live. We are delighted to support CU because we share its commitment to raising ambition, sparking the imagination of young people and making education in the broadest possible sense available to all children, regardless of background."*



*"The ScottishPower Foundation is committed to supporting the advancement of education, and believes that all children and young people should be given the opportunity to make the most of their abilities and achieve their goals, whatever they might be. We are therefore delighted to be supporting Children's University Scotland who also foster this ambition for our next generation."*



*"The Children's University is having a huge impact in attracting children to take part in extra-curricular learning. The growth of CU since it was launched in 2007 has been phenomenal by any standard, and the organisation is also expanding abroad with franchise partnerships in Australia, Singapore, Malaysia and The Netherlands. Well done to the Children's University for giving tens of thousands of children a new passion for learning in a fun and exciting way."*

Examples of (inter)national learning partners include ...



*"Everything that civilisation has to offer is a product of human intelligence; we cannot predict what we might achieve. The Children's University places children right at the centre of this aspiration, which is why KidZania UK is so proud to be a partner of and to learn from this amazing organisation. More than anything, the Children's University peddles hope ... please keep on peddling!"*

Joel Cadbury, Chair of KidZania UK



# CU by numbers..:

**£5,531,177**

the amount of income procured nationally by the CU Trust since 2007. This includes £2,361,177 (or 43%) of non-government funding

**40,000**

CU Certificates awarded to Children's University graduands in 2013 – 38,125 at Undergraduate level (30-400 hours) and 1,875 at Postgraduate level (430-1000 hours)

**4,300,000**

hours of CU learning across the British Isles in 2013 by 5 to 14 year olds

**6,700**

*Learning Destinations* in total, 3,200 of which are publicly accessible to children with their *Passport To Learning*. Others are 'restricted' *Learning Destinations* such as after-school clubs

**£1,679,689**

in CU Trust grants awarded for start-up or expansion funding between 2007 and 2014. All CU centres which received funding are now self-sustaining

**6,543**

*Passports To Learning* issued monthly during 2013

**300,000**

*Passports To Learning* in use from their inception in 2009 to December 2013

**3,500**

schools and Academies are engaged with CU across the British Isles

**160,000**

5 to 14 year old CU participants across the British Isles in 2013

**£2,500**

the anticipated average amount for the new Learning Grants as from 2014/15



**1,805**

CU Validators trained to quality assure *Learning Destinations* across the family of CUs

**155**

Higher and Further Education Institutions working with the CU globally, including Cambridge and Oxford Universities

**130**

CU centres globally

**11**

is the number of nations actively involved in the Children's University (CU) Trust in January 2014, representing 3 continents

**10**

key findings in Professor John MacBeath's (University of Cambridge) Evaluation of the Children's University 2012 evidencing the difference CU learning makes to children's achievements and standards

**9**

local CU centres in total by the end of 2007

**7**

Children's University's age in 2014 (only slowly growing up!)

**£4.06**

the average child per annum costs for 2013/14

**£2.44**

of inward investment in local CU provision for every £1 of CU Trust project funding

**£0.15**

the average Children's University child-per-hour cost in 2013/14

and finally ...

**2**

imPOSSIBLE is two letters too long at the Children's University

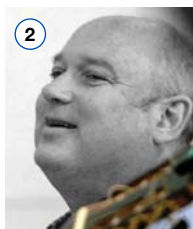
**1**

the individual child we try to get it right for – EVERY TIME!



## Children's University Chancellors ...

- 1 Michael Morpurgo**  
Children's author
- 2 Louis de Bernières**  
Author
- 3 Annie Maw**  
Retired High Sheriff of Somerset
- 4 Shobna Gulati**  
Actor of Coronation Street fame
- 5 Professor Iain Stewart**  
Scientist and broadcaster



- 6 Dr Jeremy Paul**  
Wildlife artist
- 7 Gervase Phinn**  
Author
- 8 Professor John MacBeath**  
Professor Emeritus of University of Cambridge
- 9 Nick Gillingham**  
Olympic medallist
- 10 Warwick Davies**  
Actor of 'Harry Potter' fame



- 11 His Excellency Kevin Scarce**  
Governor of South Australia

## Patrons ...

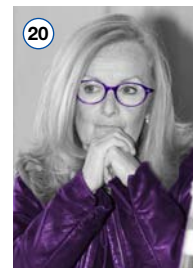
- 12 Julian Lloyd Webber**  
Cellist and Conductor
- 13 Professor Mick Waters**  
Former Director of Curriculum, Qualifications and Curriculum Authority, England
- 14 Dr Keith Bartley**  
Retired Chief Executive of Department for Education and Child Development, South Australia



- 15 Lord Putnam**

- 16 Shami Chakrabarti**  
Director of Liberty

- 17 Dr James Bradburne**  
Director General of Palazzo Strozzi, Italy



- 18 Hilary Robinson**  
Children's author

- 19 Lord Lingfield**

- 20 Professor Carla Rinaldi**  
President of Reggio Children, Italy

- 21 Joel Cadbury**  
Entrepreneur

- 22 Jackie Cooper**  
Global Chair - Creative Strategies, Edelman

- 23 Charles Martin**  
Senior Partner, Macfarlanes

- 24 Sue Langley**  
Chief Executive of UK Financial Services Investment Organisation UK

- 25 Michael Sofaer**  
Founder of Sofaer Capital Inc

- 26 Michael Norton**  
Retired Merchant Banker

## and Friends ...



**"It's like a club for developing your talent that other children also belong to and that is fun. As I inhabit the worlds of the grown-ups and of the children I can speak up for what the Children's University tries to achieve."**

Michael Morpurgo

**Children's University (CU) Trust**  
c/o Royal Northern College of Music  
124 Oxford Road  
Manchester  
M13 9RD  
United Kingdom

Tel: +44 (0)161 907 5389  
Fax: +44 (0)161 907 5391

[www.childrensuniversity.co.uk](http://www.childrensuniversity.co.uk)  
[contactus@childrensuniversity.co.uk](mailto:contactus@childrensuniversity.co.uk)

