

# Looking Past Limits

Thursday 4th and Friday 5th December 2014

**The Children's University's  
seventh annual Conference**

Shrigley Hall Hotel, Golf and Country Club, Shrigley Park,  
Pott Shrigley, Near Macclesfield, Cheshire SK10 5SB

# Day 1: Thursday 4th December

## Looking Past Limits

---

**11.00** Hotel Reception: Lunch in the Oakridge  
**Registration, Coffee and Lunch**

---

**12.15** Tilden Suite

### Welcome and Introductions

**Dr J Sandy Bradbrook**

*Chair, Children's University (CU) Trust*

**Lynne Upton**

*Head of CU Learning Support and  
Development, Children's University (CU) Trust*

---

**12.30** Tilden Suite

### The Impact of CU from an Invaluable Perspective

**Kian Saville and family**

*Student, Warwickshire Children's University*

Kian, aged 14, has been an active member of Warwickshire CU since 2011. He attended the CU Trust Reception at the House of Lords in 2013 and has confidently hosted graduation ceremonies providing inspiring presentations described as being *"the highlight of the night"*.

Kian has health issues and is currently receiving chemotherapy but despite all of this he is an active member of the CU and, alongside his family, will provide an invaluable perspective of his CU experience.

Kian is described as *"a natural leader, a great friend to his peers and has a wicked sense of humour"* Carolyn Lloyd, Central CU Trust.

---

**12.45** Tilden Suite

### The Child as a Learner in the 21st Century

**Lord Puttnam CBE**

*Chair of Atticus Education and Patron  
of the Children's University*

Following a 30 year career as an independent producer of award-winning films including Chariots of Fire, Bugsy Malone and Memphis Belle, he retired from film production in 1998 to focus on his work in public policy as it relates to education, the environment and the creative and communications industries.

He brings an unparalleled perspective and expertise to our own mission to *"promote social mobility"* and be *"a satellite navigation system to better places in life."*

---

**13.15** Tilden Suite

### Inside Out or Outside In? – CU and the Curriculum

**Jill Robertson**

*Headteacher, Offley Primary School, Cheshire  
and Trustee of the Children's University (CU) Trust*

Jill was a teacher in Stoke-on-Trent and Staffordshire for over 20 years. In 2010 she was appointed as Headteacher at Harpfield Primary Academy and in 2014 she became Headteacher of Offley Primary School. Jill is passionate about enabling all of the children within her school to have the best possible life chances and this is one of the many reasons that she became involved with the Children's University.

With an ever-changing curriculum, how can CU be used to encourage and support a rich curriculum?

---

**13.45** Courtyard

### Coffee and the CU Christmas Photo

---

**14.30**

### CU Think-&-Do Shops

Three different Think-&-Do Shops at which delegates will have the opportunity to explore emerging topics in more detail; a result of specific requests made by our local, regional and (inter)national CUs

**14.30 – 15.30 Session 1**

**15.40 – 16.40 Session 2**

**16.50 – 17.50 Session 3**

Please refer to the Session Attendance Form in your delegate pack to find out when you will be attending each session.

---

**18.00** Hotel Reception

### Close and Check In

---

**19.15** Courtyard Bar

### Drinks Reception

---

**19.45** William Turner Suite

### Reflections on the Day

**Professor Mick Waters**

*Patron, Children's University*

**Dinner**

# Day 2: Friday 5th December

## The Power of the CU Brand

---

09.00 Tilden Suite

### CU Trust Website and Merchandise

**Debbie Bird**

*Head of Local CU Support and Development,  
Children's University (CU) Trust*

**Caroline Gilbert**

*Head of Business Development and Support,  
Children's University (CU) Trust*

## The Power of CU Partnership

---

09.30 Tilden Suite

### Raring2go!

**Freddie St George**

*Managing Director of Mojo Publishing Ltd,  
the dynamic franchisor of Raring2go!*

Raring2go! labels itself as the definitive local guide of what to do and where to go for families with primary school age children. It is both a high quality printed magazine and a website offer: [www.raring2go.co.uk](http://www.raring2go.co.uk).

---

10.00 Tilden Suite

### Exploring the Extra-Ordinary Power of Partnership

Working with our CU friends from Higher Education in Australia, Malaysia and China we will explore how CU can facilitate learning across different cultures and communities, embracing difference and creating engaging CU learning nationally and internationally.

**Kiri Hagenus**

*Director,  
Children's University Australia*

**Gary Martin**

*Executive Director,  
Children's University Australia*

**Mark Upton**

*Director of Education,  
Children's University China*

**Richard Machin**

*Headteacher, Finham Primary School,  
Coventry Children's University*

**Jagindar Singh**

*Chief Operating Officer,  
Children's University Malaysia*

11.00 Tilden Suite

### Coffee and Rapid Information Exchange (learning from each other)

Find out more about each other's Children's Universities through our own version of 'speed-dating'. Learning from each other through discovering and sharing practice.

---

11.45 Tilden Suite

### The Win-Winship between CU and OFFA

**Professor Les Ebdon CBE DL**

*Director of Fair Access to Higher  
Education and former Vice Chancellor  
of the University of Bedfordshire*

The Office for Fair Access (OFFA) is an independent public body that helps safeguard and promote fair access to Higher Education. Professor Ebdon was awarded a CBE in 2009 for services to local and national Higher Education and was appointed Deputy Lieutenant of Bedfordshire in 2011.

---

12.15 Tilden Suite

### 'Stop with the labels ... because we are not jam jars; we are extraordinary, different, wonderful people.'

**Caroline Casey**

*Social entrepreneur and founder of Kanchi,  
The Ability Awards Programme and co-  
founder of Elephant Family, Ashoka Fellow,  
Young Global leader of the World Economic  
Forum, Eisenhower Fellow, TED speaker*

As a social entrepreneur committed to the social and economic inclusion of the 1 Billion people with a disability, Caroline works to globally transform our understanding of disability and make the basic human right of inclusion a norm in a world where exclusion is a deeply ingrained bad habit. Caroline was awarded an honorary Doctorate of Laws from NUI Ireland for her system changing work.

---

12.45 Tilden Suite

### And finally ....

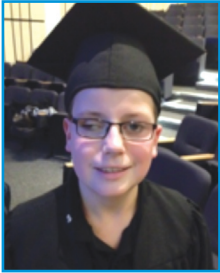
---

13.00 Tilden Suite

### Lunch and Departure

# Conference Speakers

## Kian Saville



Kian, aged 14, has been an active member of Warwickshire CU since 2011. He attended the CU Trust Reception at the House of Lords in 2013 and has confidently hosted graduation ceremonies providing inspiring presentations

described as being *“the highlight of the night”*.

*“Kian is a natural leader, a great friend to his peers and has a wicked sense of humour”* Carolyn Lloyd, Central CU Trust.

Kian was born blind in his right eye with very poor vision in his left. In 2002 he was diagnosed with a Coarctation of Aorta and underwent major Heart surgery. In August 2012, Kian suffered fits and collapsed to the point where he stopped breathing. A CT scan revealed he had 6 brain tumours, a condition known as Neurofibromatosis Type 2. Kian underwent major Brain Surgery in October 2013 and following two operations, a large tumour was removed. Further surgery has taken place on his chest and he has recently received Chemotherapy treatment which will continue for a year.

Despite all of his health issues, Kian is an active member of the Children’s University, enjoys school and attends his Swimming club four times per week.

*“In Children’s University I have learnt to be confident with what I have produced in work and extra-curricular activities, and to be able to speak and express my feelings to big groups of people”*.

## Lord Puttnam CBE



David Puttnam is the Chair of Atticus Education, an online education company based in Ireland. Atticus delivers interactive seminars on film and a variety of other subjects to educational institutions around the world.

Following a 30 year career as an independent producer of award-winning films including Chariots of Fire, Bugsy Malone and Memphis Belle, he retired from film production in 1998 to focus on his work in public policy as it relates to education, the environment and the creative and communications industries.

Lord Puttnam’s outstanding contribution to both the creative industries and education led him to found the National Teaching awards and to serve as the first Chair of the General Teaching Council. He has played a pivotal role in putting the needs of children at the centre of the debate about the shape of society in the future.

Through his work with NESTA, his continuing interest in film, television and the arts, and currently his passion for harnessing and sharing all that technology can offer to improve our world, he brings an unparalleled perspective and expertise to our own mission to *“promote social mobility”* and be *“a satellite navigation system to better places in life.”*

[www.davidputtnam.com](http://www.davidputtnam.com)

---

*Lord Puttnam is a Patron of the Children’s University*

## Jill Robertson



With an ever-changing curriculum, how can CU be used to encourage and support a rich curriculum?

Jill has been a teacher in Stoke-on-Trent and Staffordshire for over 20 years. She worked for the

Local Authority for 3 years training Graduate Teachers and as Advisor for NQTs. In 2008 she returned to a school setting as Deputy Headteacher. In May 2010 she was appointed as Headteacher at Harfield Primary Academy within the Creative Education Trust. The school is within one of the 10 most disadvantaged areas in the country with a very diverse population. In the 5 years Jill was Headteacher the school made rapid improvements in outcomes for all groups of children.

In September 2014 Jill took on her next challenge as Headteacher of Offley Primary School in Cheshire East. This is a much bigger school with 385 children and is due to expand further over the next 12 months. A different catchment area: a new challenge!

Jill is passionate about enabling all of the children within her school to have the best possible life chances and this is one of the many reasons that she became involved with the Children's University.

[www.offley.cheshire.sch.uk](http://www.offley.cheshire.sch.uk)

---

*Jill Robertson is a Trustee of the Children's University (CU) Trust*

## Professor Mick Waters



Professor Mick Waters has a range of career experiences that inform his work. Currently, he works with the schools in the Black Country Challenge in raising standards in the West Midlands. He is also President of the Curriculum

Foundation, which seeks to promote a voice for the power and potential of the whole curriculum.

Previously, he worked at the Qualifications and Curriculum Authority as Director of Curriculum taking a leading role in helping schools to rethink their approach to curriculum design and influencing national policy on aspects of the national curriculum.

Before joining QCA, Mick was Chief Education Officer for the City of Manchester.

Mick has experience of headship in two schools and of working in teacher training.

Mick believes in being close to teachers, children and schools, and is often to be found in the classroom working with children. He is passionate about the role of education in improving life chances for pupils.

Mick was a Trustee of the CU Trust from 2009 to 2014.

---

*Professor Mick Waters is a Patron of the Children's University*

## Freddie St George



Freddie St George is the managing director of Mojo Publishing Ltd, the franchisor of Raring2go! He is a fluent Italian speaker and graduated from the University of Trento, Italy with a first class degree in Economics.

He is father to two daughters age 11 and 9 and is a serving parent governor at his daughters primary school. Since 1990 he has combined his passion for classic Mini Coopers by organising an annual fundraising drive to Italy called the Italian Job, which has so far raised £2.4 million pounds for children's charities across the UK.

Raring2go! labels itself as the definitive local guide of what to do and where to go for families with primary school age children. There are over 50 editions of Raring2go! in 50 territories across the UK operated by mums on a franchise model. Each edition produces a minimum of 10,000 copies which are distributed through schools directly into the hands of families. Alongside the colourful and vibrant A5 size magazines each Raring2go! editor runs a hyper local daily updated website which adds another dimension to our suite of products.

[www.raring2go.co.uk](http://www.raring2go.co.uk)

## Professor Les Ebdon CBE DL



Professor Ebdon has been Director of Fair Access to Higher Education since 1 September 2012. He was previously Vice Chancellor of the University of Bedfordshire.

That followed an illustrious career in analytical chemistry, including more than 250 publications and several awards.

Professor Ebdon obtained his PhD at Imperial College, London, then lectured at Makerere University in Uganda and Sheffield Hallam University, before becoming Reader in Analytical Chemistry at what is now the University of Plymouth. He was promoted to a personal chair in 1986, became Head of Environmental Sciences in 1989 and then, in the same year, Deputy Director. He was promoted to Deputy Vice Chancellor (Academic) in 1992. He remained in that position until 2003, when he was appointed Vice Chancellor at the University of Luton and became Vice Chancellor of the University of Bedfordshire on its creation in 2006.

Professor Ebdon was awarded a CBE in 2009 for services to local and national Higher Education and was appointed Deputy Lieutenant of Bedfordshire in 2011. In 2013 he was named one of Britain's 500 Most Influential People by Debrett's.

[www.offa.org.uk](http://www.offa.org.uk)

## Caroline Casey



Caroline Casey is a social entrepreneur committed to the social and economic inclusion of the 1 Billion people with a disability. Caroline works to globally transform our understanding of disability and make the basic human right

of inclusion a norm in a world where exclusion is a deeply ingrained bad habit. Her vision - a world where no one is left, she believes, will be achieved by inciting business leaders interest and accountability for inclusion. She is the founder of Kanchi, The Ability Awards Programme and co-founder of Elephant Family. She is an Ashoka Fellow, Young Global leader of the World Economic Forum, Eisenhower Fellow, TED speaker and was awarded an honorary doctorate of Laws From NUI Ireland for her system changing work. Caroline is passionate about dancing, snow angels, running, art, elephants, travel and despite loving food is quite a useless cook.

[www.kanchi.org](http://www.kanchi.org)



## Kiri Hagenus

*Director,  
Children's University Australia*



## Gary Martin

*Executive Director,  
Children's University Australia*



## Mark Upton

*Director of Education,  
Children's University China*



## Richard Machin

*Headteacher,  
Finham Primary School,  
Coventry Children's University*



## Jagindar Singh

*Chief Operating Officer,  
Children's University Malaysia*

## Think-&-Do Shops

### Looking Beyond Limits

**Debbie Bird**

*Children's University (CU) Trust*

**Carolyn Lloyd**

*Central CU Trust*

With an increasing number of enquiries and a growing interest in CU from Home Educators, Virtual Schools working with Looked After Children, Supplementary Schools and the changing curriculum for SEN, SEND and Special Schools we explore the introduction of a CU Trust approach and a common policy to working with these groups.

### CU in the Community

**Lynne Upton**

*Children's University (CU) Trust*

*With partners from:*

**Code Club, The Outward Bound Trust, PDSA, Free the Children**

A new look Market Place where managers will have the opportunity to Think-&-Do alongside some of our national partners.

We will be exploring new opportunities and resources to support CU Learning Activities with a Social Action focus, showcasing emerging projects and ideas from our funded work with Education Endowment Foundation, Durham University and our CU Managers in Blackpool, Blackburn, Middlesbrough and Lancashire.

A CU exhibition of photographs, film clips, feedback and displays of summer activities will provide the perfect backdrop to a library of downloadable/on-line *Learning Destination* resources available to CU Managers.

### The OFFA Partnership

**Mary De la Peña**

*CU Scotland*

**Lucy Nottingham**

*University of East Anglia*

We've heard of it, but what does it mean in practice? Working with our CU friends from Higher Education we will explore the opportunities that an OFFA Partnership can bring.

## Children's University (CU) Trust



**Dr J Sandy Bradbrook**

*Chair,*

*Children's University (CU) Trust*



**Lynne Upton**

*Head of CU Learning*

*Support and Development,*

*Children's University*

*(CU) Trust*



**Debbie Bird**

*Head of Local CU Support*

*and Development,*

*Children's University*

*(CU) Trust*



**Caroline Gilbert**

*Head of Business*

*Development and Support,*

*Children's University*

*(CU) Trust*

## Think-&-Do Shops



**Carolyn Lloyd**

*CU Manager,*

*Central CU Trust*



**Mary De la Peña**

*Chief Executive,*

*CU Scotland*



**Lucy Nottingham**

*Outreach Officer,*

*University of East Anglia*