

# Kent Police Open Day

Sunday 30 June 2019, 10am to 4pm



Use this activity sheet and complete it at the Kent Police Open Day to earn 2 Learning Credits!

**Visit at least four displays or activities in each zone and tell us about them**

ZONE	STAND	SOMETHING YOU LEARNED...
PURPLE		
BLUE		
ORANGE		

## When and how should you contact the Police?

Reasons to call 999	Reasons to call 101	Reasons to report a crime online

## What are the GOLDen rules for families to keep children safe online?

The internet is an essential part of children's lives and can provide a range of positive opportunities. Whilst there can be risks for children and young people online, many of them use the internet regularly without coming to any harm, so it's important for families to be realistic. Education around safe use is essential as banning the internet or specific websites, games and apps does not work and can make children feel less able to report a problem.

Visit The Education People's Becki or someone from the POLIT team in the Orange Zone to find out the GOLDen rules for families around online safety...



stands for

---

---

---



stands for

---

---

---



stands for

---

---

---



stands for

---

---

---

## Create a poster with your parent/carer for staying safe online at home

What information and features do you think your poster would need to display?

# How many of the words below can you find in the word search\*?

P	Z	G	Y	E	P	R	I	N	T
A	K	L	U	M	M	L	H	N	S
T	W	E	L	E	R	T	A	S	E
R	Q	C	M	R	O	P	N	E	R
O	J	I	K	G	F	O	D	A	R
L	R	L	Z	E	I	D	C	R	A
C	D	O	G	N	N	C	U	C	W
A	C	P	M	C	U	Y	F	H	K
R	J	S	Y	Y	T	E	F	A	S
R	E	H	C	T	A	P	S	I	D

1. ARREST
2. CRIME
3. DOG
4. EMERGENCY
5. HANDCUFFS
6. PATROL CAR
7. POLICE
8. SAFETY
9. SEARCH
10. UNIFORM

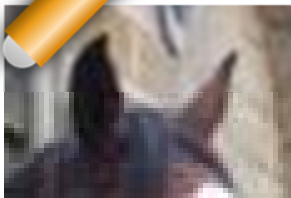


\* Your parent/carer can help you with this search! Words can be found forwards, backwards and diagonally!



## Kent Police Open Day "What is this?"

Here are some images of things you might see or learn about at the Kent Police Open Day. It's your job to work out what you are looking at!




---

---

---



---

---

---



---

---

---



---

---

---




---

---

---



---

---

---



---

---

---



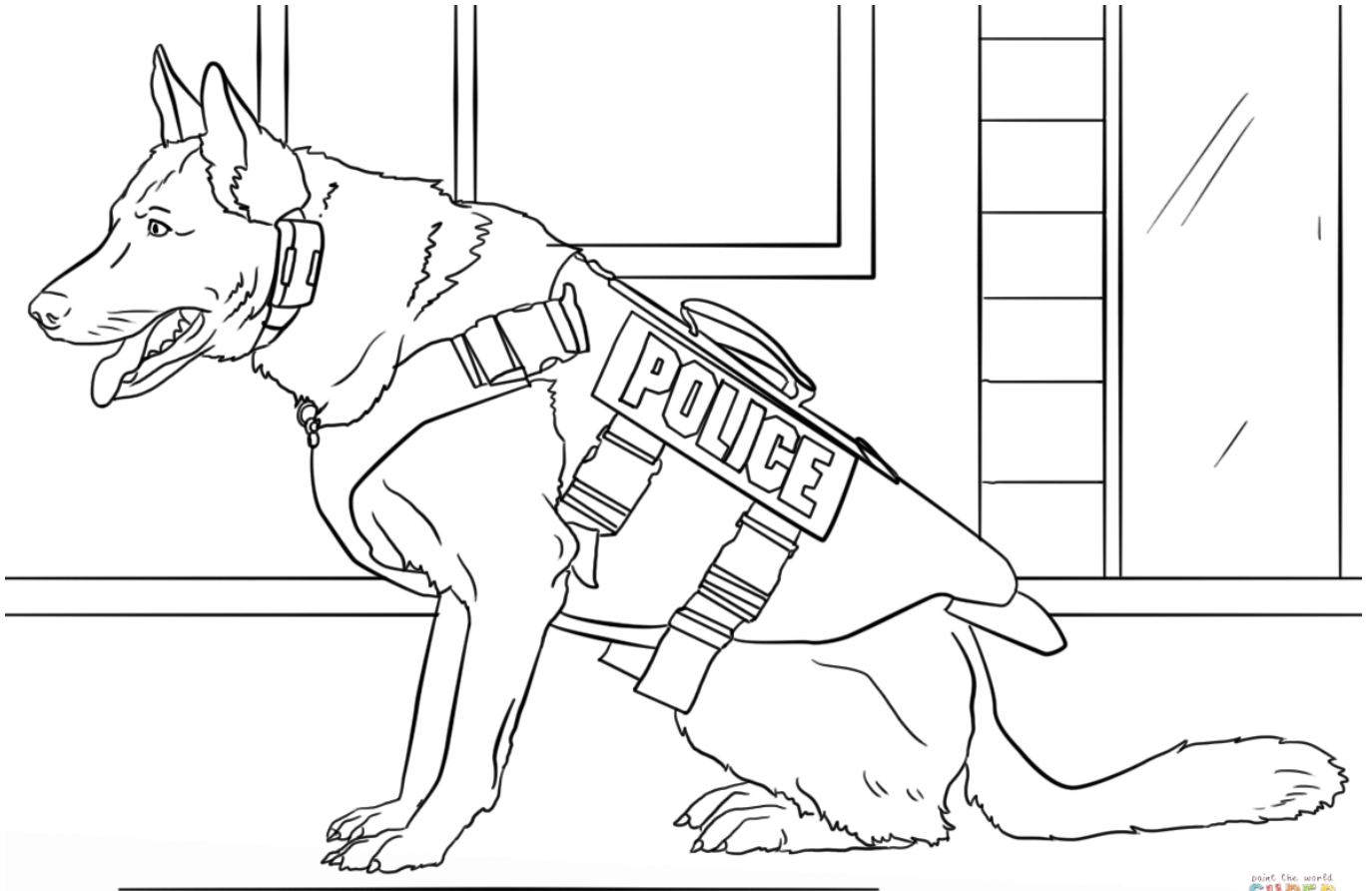
---

---

---

# What are Police dogs used for?

As well as colouring in the Police dog, find out three things a Police dog could be used for?



1. \_\_\_\_\_
2. \_\_\_\_\_
3. \_\_\_\_\_

## Tell us about your day...

My favourite activity was...

What was the favourite fact you learned today?

I would like to find out more about...